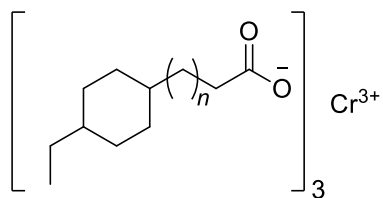
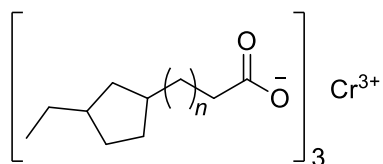


Catalog # 93-2424 Chromium (III) naphthenate, ~30% in mineral spirits (2% Cr)



n = 0-5

Technical Notes

1. Used in chemistry of the extreme-pressure lubricant additive lead naphthenate on steel surfaces [1].
2. Used as an additive to gasoline as anti-static agent [2].
3. Effects of in situ esterification on the performance of carboxyl functionalized rubber-modified epoxy film adhesives [3].
4. Used in the process of the catalytic cyclohexane oxidation in the liquid phase [4].
5. Used in wood resin bleeding process [5].

References:

1. *Langmuir* **1991**, 7, 2981.
2. *Talanta* **1997**, 44, 1803.
3. *J. Appl. Polym. Sci.* **2000**, 76, 728.
4. *Chem. Eng. Sci.*, **2001**, 56, 1285.
5. *Holz als Roh- und Werkstoff* **2002**, 60, 18.