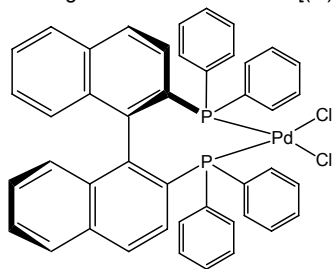
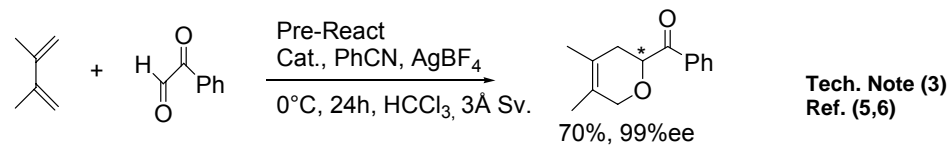
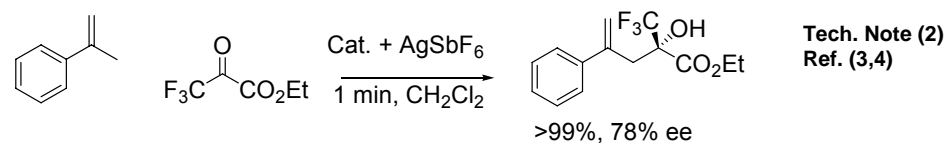
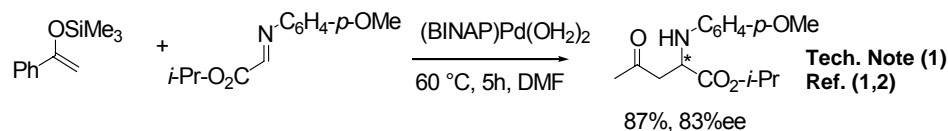


Catalog # 46-0870 Dichloro[(R)-(+)-2,2'-bis(diphenylphosphino)-1,1'-binaphthyl]palladium(II), min. 98%



Technical Notes:

1. Catalyst precursor, with AgBF_4 , for the enantioselective addition of silyl ethers, to imines to produce β -amino ketones, and to aldehydes to produce 3-hydroxy-1-propanone aldol addition products.
2. Catalyst precursor, with AgSbF_6 , for the asymmetric carbonylene reaction.
3. Catalyst precursor for hetero Diels-Alder reaction of simple dienes with aldehydes and aryl glyoxals.



References:

1. *J. Am. Chem. Soc.*, **1999**, 12, 15450.
2. *Tetrahedron Lett.*, **2006**, 47, 3956.
3. *Organometallics*, **2007**, 26, 5961.
4. *Tetrahedron, Asymm.*, **2004**, 15, 3885.
5. *Tetrahedron Lett.*, **1998**, 39, 6253.
6. *J. Org. Chem.*, **1999**, 64, 8660.