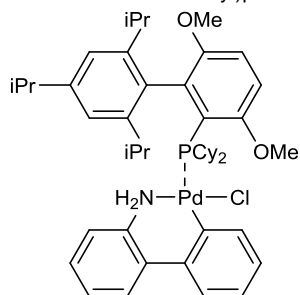


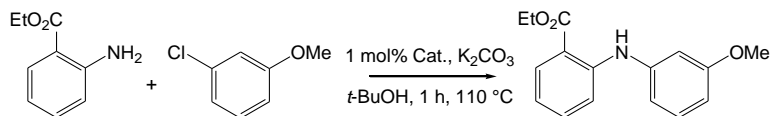
Catalog # 46-0292 Chloro(2-dicyclohexylphosphino-3,6-dimethoxy-2',4',6'-tri-*i*-propyl-1,1'-biphenyl)(2-amino-1,1'-biphenyl-2-yl)palladium(II), min. 98% [BrettPhos Palladacycle]



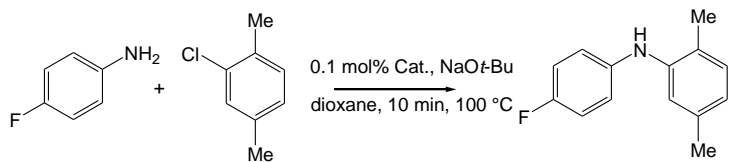
Note: Patents: US 6,395,916, US 6,307,087. Buchwald Palladacycle Precatalyst Kit 3 component.

Technical Note:

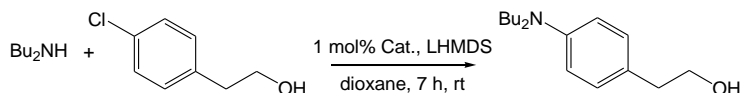
1. Palladium precatalyst for fast Suzuki-Miyaura coupling reactions.
2. Coupling of chloropyrazoles with boronic acids.



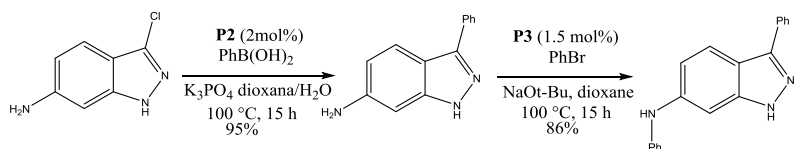
**Tech. Note (1)**  
**Ref. (1)**



**Tech. Note (1)**  
**Ref. (1)**



**Tech. Note (1)**  
**Ref. (1)**



**Tech. Note (1)**  
**Ref. (2)**

Reference:

1. *J. Am. Chem. Soc.*, **2010**, 132, 14073.
2. *J. Am. Chem. Soc.*, **2013**, 135, 12879.