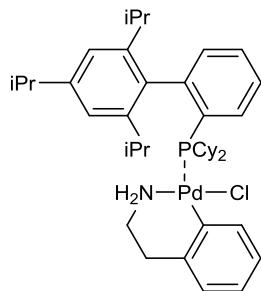


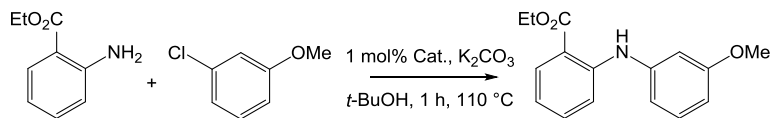
Catalog # 46-0268 Chloro(2-dicyclohexylphosphino-2',4',6'-tri-*i*-propyl-1,1'-biphenyl)[2-(2-aminoethyl)phenyl] palladium(II) methyl-*t*-butylether adduct, min. 98%



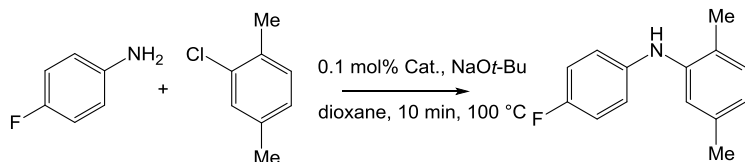
Note: Patents: US 6,395,916, US 6,307,087.

Technical Notes:

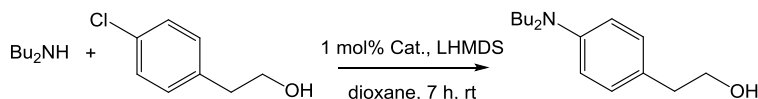
1. Catalyst for cross-coupling reactions of electron-deficient anilines with aryl chlorides.
2. Catalyst for rapid C-N bond-forming process at low catalyst loading.
3. Catalyst for C-N cross-coupling reactions, at or below room temperature.
4. Catalyst for the synthesis of tetracyclic indoles via intermolecular α -arylation of ketones.
5. Catalyst for the cross-coupling of benzyl chlorides with cyclopropanol-derived ketone homoenolates



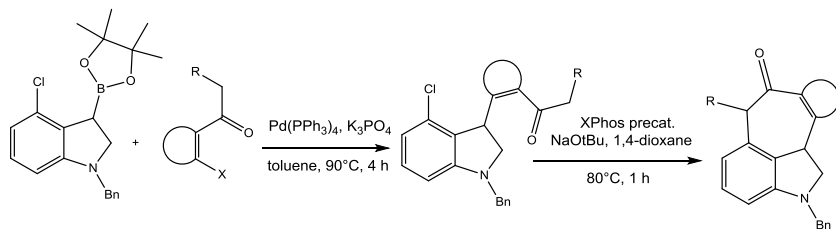
Tech. Note (1)
Ref. (1)



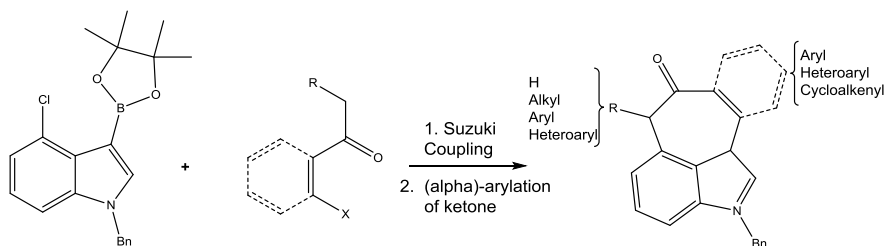
Tech. Note (2)
Ref. (1)



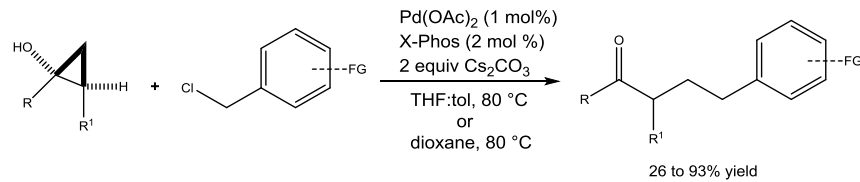
Tech. Note (3)
Ref. (1)



Tech. Note (4)
Ref. (2)



Tech. Note (4)
Ref. (2)



Tech. Note (5)
Ref. (3)

References:

1. *J. Am. Chem. Soc.*, **2008**, *130*, 6686.
2. *J. Org. Chem.*, **2012**, *77*, 4123.
3. *Org. Lett.*, **2014**, *16*, 5854.