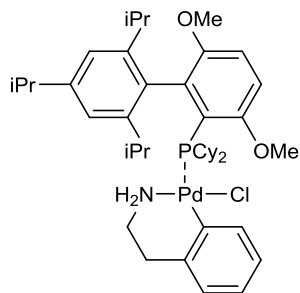


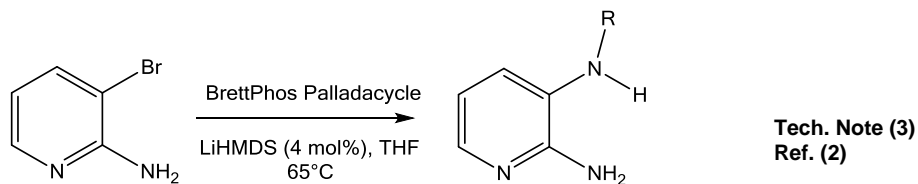
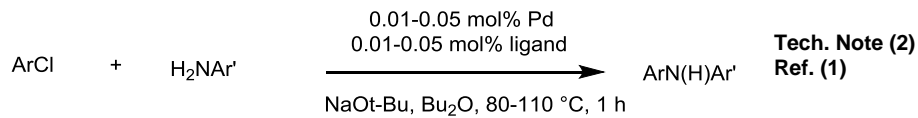
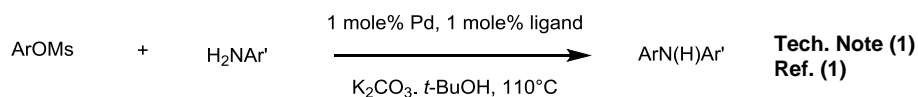
Catalog # 46-0267 Chloro[2-(dicyclohexylphosphino)-3,6-dimethoxy-2'-4'-6'-tri-i-propyl-1,1'-biphenyl][2-(2-aminoethyl)phenyl]palladium(II) methyl-t-butylether adduct, min. 98%



Note: Patents: US 6,395,916, US 6,307,087.

Technical Notes:

1. Catalyst for cross-coupling reactions using aryl mesylates with electron-deficient anilines.
2. Catalyst for rapid C-N bond-forming processes at low catalyst loading.
3. Cross-coupling of 3-Bromo-2-aminopyridine with primary amines.



References:

1. *J. Am. Chem. Soc.*, **2008**, *130*, 13552.
2. *Org. Lett.*, **2011**, *13*, 1984