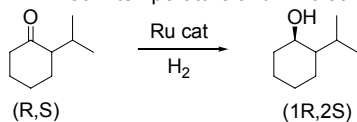


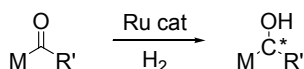
Catalog # 44-0211 Dichloro[(S)-(-)-2,2'-bis(diphenylphosphino)-1,1'-binaphthyl][(2S)-(+)-1,1-bis(4-methoxyphenyl)-3-methyl-1,2-butanediamine]ruthenium(II) dichloromethane adduct, min. 97%

Technical Note:

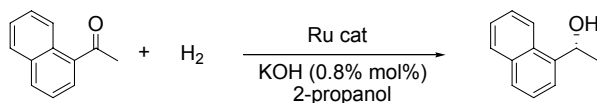
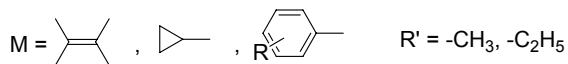
1. The NOYORI catalysts are a ruthenium-based system containing a phosphine and 1,2-diamine ligand. The catalysts are used in the highly-efficient, enantio and diastereoselective hydrogenation of simple ketones, usually under the mild conditions of room temperature and 1-10 atm of hydrogen pressure.



Ref. (1)



Ref. (2,3)



Ref. (4)

References:

1. *J. Org. Chem.*, **1996**, 61, 4872.
2. *Angew. Chem. Int. Ed.*, **2001**, 40, 40 (review article).
3. *J. Am. Chem. Soc.*, **1998**, 120, 13529.
4. *Angew. Chem. Int. Ed.*, **1999**, 38, 495.