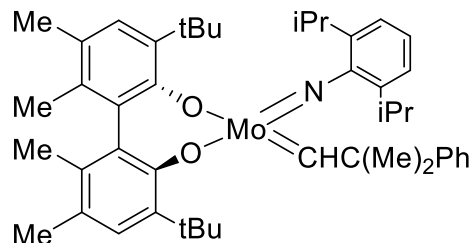
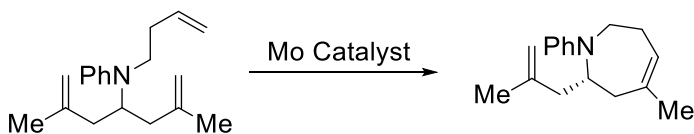


Catalog # 42-1214 2,6-Diisopropylphenylimidoneophylidene[(S)-(-)-BIPHEN]molybdenum(VI), min. 97%
(S) SCHROCK-HOVEYDA CATALYST

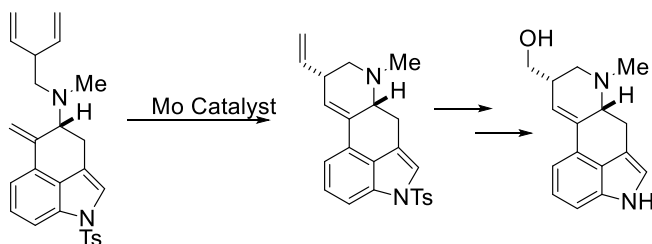


Technical Notes:

1. Catalyst used for the enantioselective ring-closing metathesis of aminobenzenes.
2. Catalyst used for the enantioselective synthesis of (+)-Isolysergol via ring-closing metathesis.



Tech. Note (1)
Refs. (1,2)



Tech. Note (2)
Ref. (3)

References:

1. *J. Am. Chem. Soc.*, **2002**, 124, 6991.
2. *Nature*, **2008**, 456, 933.
3. *Org. Lett.*, **2010**, 12, 2610.