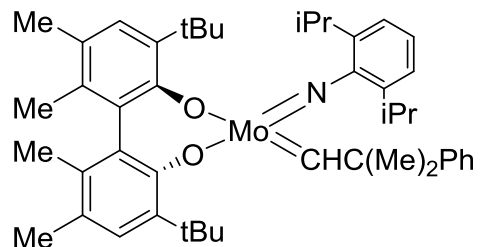
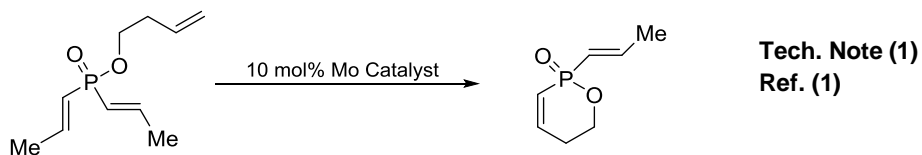


Catalog # 42-1213 2,6-Diisopropylphenylimidoneophylidene[(R)-(+)-BIPHEN]molybdenum(VI), min. 97% (R)
SCHROCK-HOVEYDA CATALYST



Technical Note:

1. Catalyst used for the asymmetric ring-closing metathesis of phosphine oxides.



Reference:

1. *Angew. Chem. Int. Ed.* **2009**, *48*, 762.