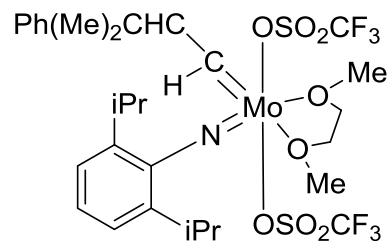


Catalog # 42-1210 2,6-Diisopropylphenylimido neophylidenemolybdenum(VI) bis(trifluoromethanesulfonate)
dimethoxyethane adduct



Technical Note:

1. Used as a starting material for preparations of various molybdenum metathesis catalysts.

References:

1. *J. Am. Chem. Soc.* **2004**, 126, 10945.
2. *Organometallics* **2006**, 25, 1412.
3. *J. Am. Chem. Soc.* **2006**, 128, 16373.
4. *Organometallics* **2008**, 27, 6570.
5. *Angew. Chem. Int. Ed.* **2011**, 50, 7829.
6. *Organometallics* **2014**, 33, 5334.