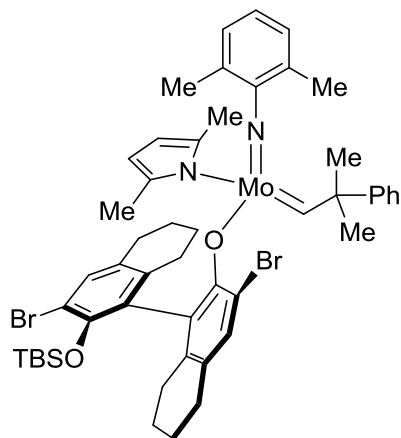


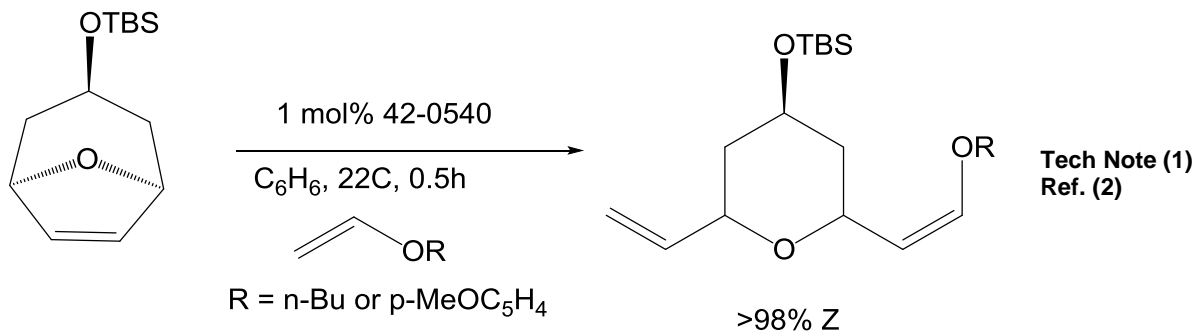
Catalog # 42-0540 (R)-1-((3,3'-Dibromo-2'-((tert-butyldimethylsilyl)oxy)-5,5',6,6',7,7',8,8'-octahydro-[1,1'-binaphthalen]-2-yl)oxy)-1-(2,5-dimethyl-1H-pyrrol-1-yl)-N-(2,6-dimethylphenyl)-1-(2-methyl-2-phenylpropylidene)molybdenum (VI)



Developed by XiMo. Sold under license from XiMo for research purposes only. Patents: U.S. 9,687,834, EP2242578.

Technical Notes:

1. Catalyst used for:
 - a. Enantio-selective ring opening²/cross metathesis.
 - b. Ring closing metathesis.
 - c. Enantio- and endo-selective ene-yne ring closing metathesis.



References:

1. *Nature*, **2011**, 471, 461-466.
2. *J. Am. Chem. Soc.*, **2012**, 134, 2788-2799.