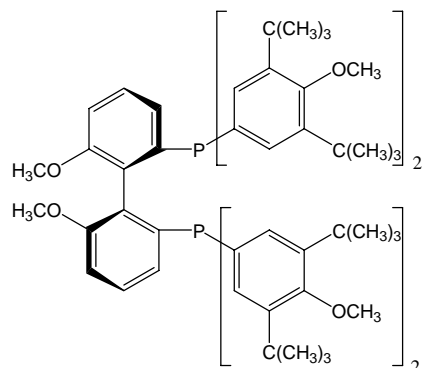
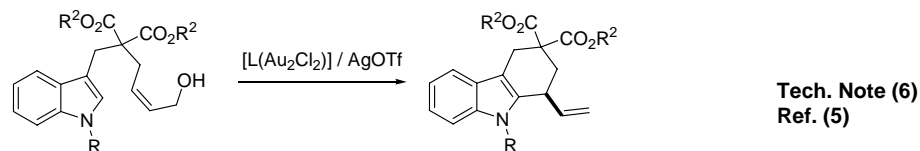
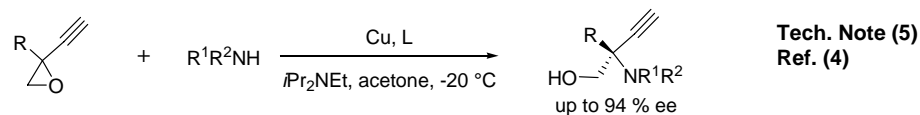
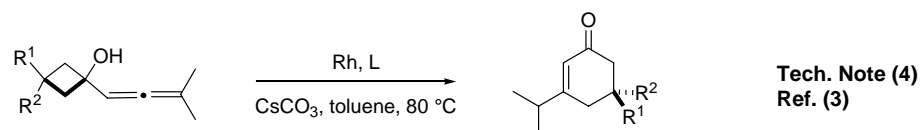
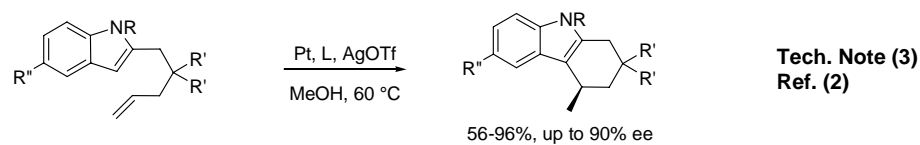
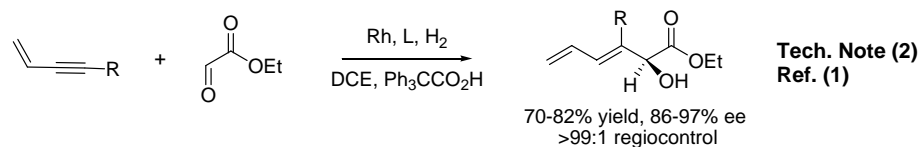


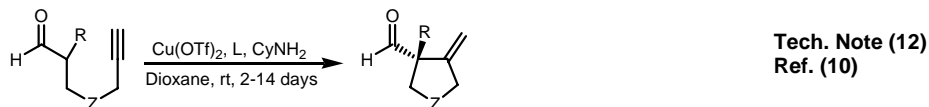
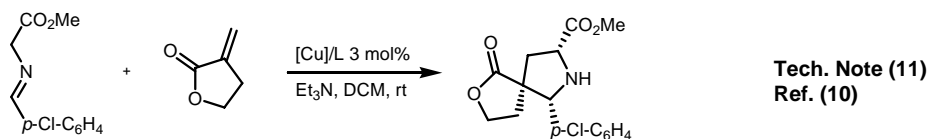
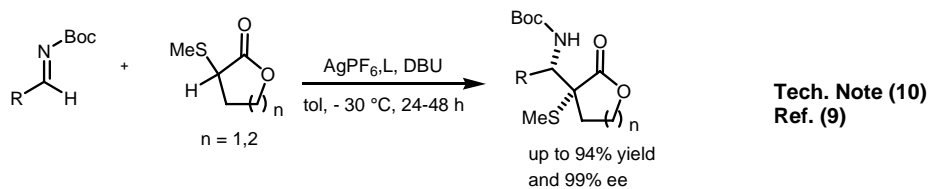
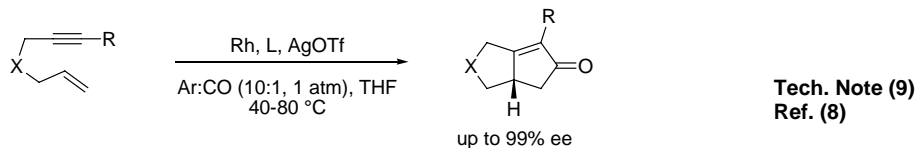
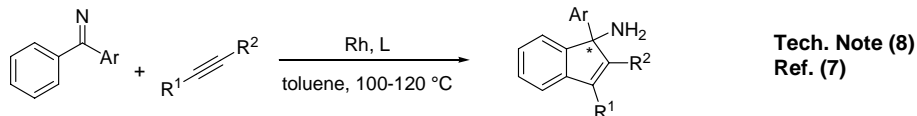
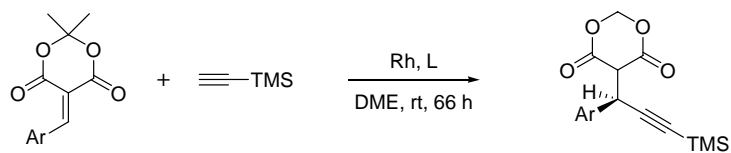
Catalog # 15-0042 (R)-(-)-2,2'-Bis[di(3,5-di-*t*-butyl-4-methoxyphenyl)phosphino]-6,6'-dimethoxy-1,1'-biphenyl, min. 97%

Note: Sold in collaboration with Solvias for research purposes only. Solvias (R)-MeO BIPHEP Ligand Kit component.

Technical Notes:

1. See [15-0178](#).
2. Rh-catalyzed reductive coupling of acetylene to aldehydes and ketones.
3. Pt-catalyzed intramolecular hydroarylation of unactivated alkenes with indoles.
4. Enantioselective C-C bond activation of allenyl cyclobutanes.
5. Enantioselective ring-opening of rac-ethynyl epoxides.
6. Enantioselective Au-catalyzed allylic alkylation of indoles with alcohols.
7. Enantioselective Rh-catalyzed conjugate alkylation with TMS-acetylene.
8. Enantioselective Rh-catalyzed [3+2] annulation of aromatic ketimines.
9. Asymmetric Rh-catalyzed Pausan-Khand reaction.





References:

1. *Org. Lett.*, **2007**, 9, 3745.
2. *Org. Lett.*, **2006**, 8, 3801.
3. *Angew. Chem. Int. Ed.*, **2008**, 47, 9294.
4. *J. Org. Chem.*, **2009**, 74, 7603.
5. *Angew. Chem. Int. Ed.*, **2009**, 48, 9533.
6. *J. Am. Chem. Soc.*, **2009**, 131, 14608.
7. *Angew. Chem. Int. Ed.*, **2011**, 50, 11098.
8. *Adv. Synth. Catal.*, **2010**, 352, 2032.
9. *Org. Lett.*, **2013**, 15, 2632.
10. *Chem. Commun.*, **2013**, 49, 9642.
11. *Chem. Commun.*, **2012**, 48, 6559.