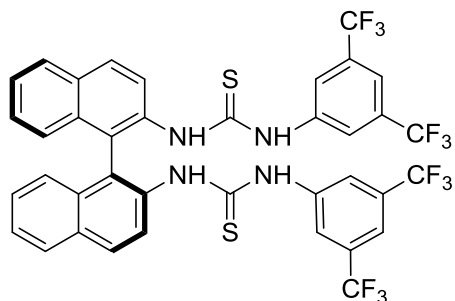
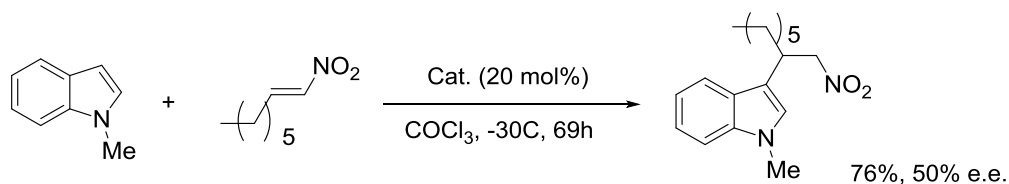


Catalog # 07-8410 N,N'-(S)-[1,1'-Binaphthalene]-2,2'-diylbis[N'-(3,5-bis(trifluoromethyl)phenyl)thiourea]



Technical Notes:

1. **Friedel-Crafts Addition:** It has been shown that catalytic amounts (10-20 mol%) of novel axially chiral bis-arylthioureas promote the asymmetric organocatalytic Friedel-Crafts type addition of indole and N-methylindole to nitroolefins.



References:

1. *Tetrahedron Lett.*, **2006**, 47, 7037-7042.