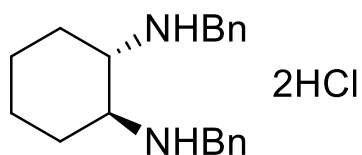
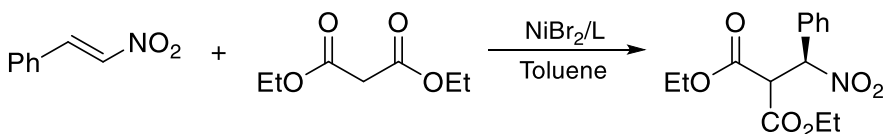


Catalog # 07-4074 (1S,2S)-N,N'-Bis(phenylmethyl)-1,2-cyclohexanediamine dihydrochloride, min. 98%

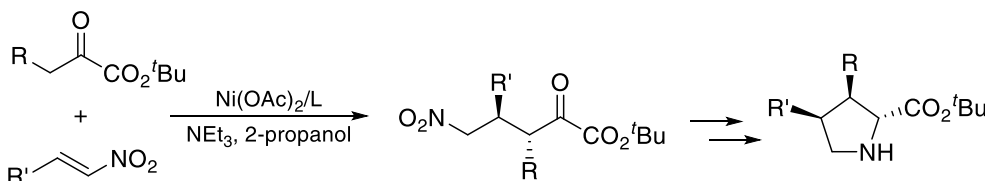


Technical Notes

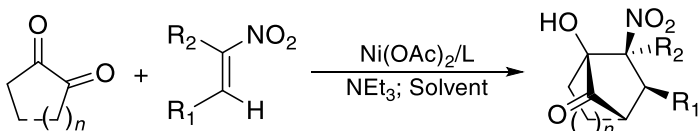
1. Ligand used for the Ni-catalyzed, enantioselective Michael additions of 1,3-dicarbonyl compounds to nitroalkenes.
2. Ligand used for the Ni-catalyzed, enantioselective conjugate addition of  $\alpha$ -ketoesters to nitroalkenes.
3. Ligand used in the preparation of bicycle-octane derivatives via Ni-catalyzed enantioselective cascade reaction.
4. Catalyst used for the Mukaiyama-Michael addition of fluorinated enol silyl ethers to tetrasubstituted olefins



**Tech Note (1)**  
**Ref. (1)**



**Tech Note (2)**  
**Ref. (2)**



**Tech Note (3)**  
**Ref. (3)**

References:

1. *J. Am. Chem. Soc.*, **2007**, 129, 11583.
2. *J. Am. Chem. Soc.*, **2010**, 132, 4036.
3. *Org. Biomol. Chem.*, **2012**, 10, 4767.