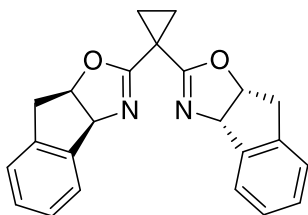
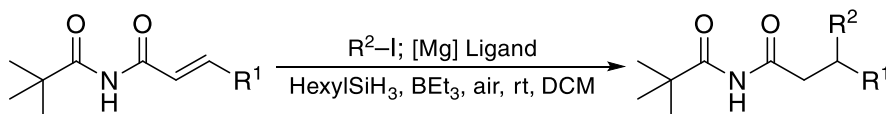


Catalog # 07-1409 (3a*S*,3'a*S*,8a*R*,8'a*R*)-2,2'-Cyclopropylidenebis[3a,8a-dihydro-8*H*-Indeno[1,2-*d*]oxazole]

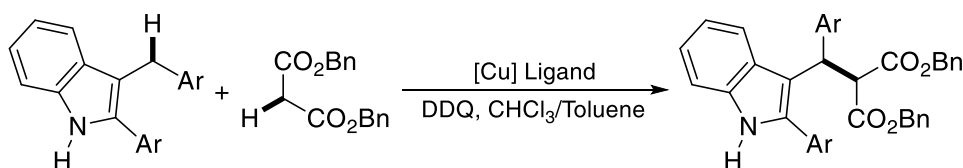


Technical Notes

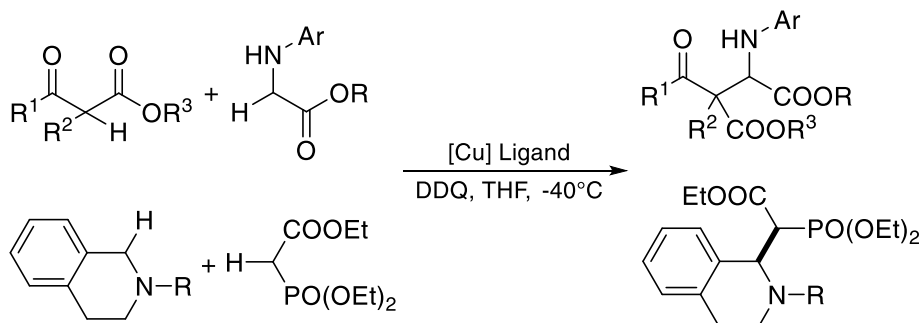
1. Ligand for enantioselective radical reactions using silanes and promoted by a chiral magnesium Lewis acid.
2. Ligand used in Cu-catalyzed highly enantioselective C–H activation-based oxidative coupling reaction of 3-arylmethylindoles with dibenzyl malonate.
3. Ligand for the Cu-catalyzed oxidative and enantioselective cross-coupling reaction of N-substituted glycine esters with α -substituted β -ketoesters for the synthesis of various α -alkyl α -amino acids.
4. Ligand for the Cu-catalyzed Friedel-Crafts alkylation reaction of styrenes with trifluoropyruvates to afford the corresponding chiral allylic alcohols.
5. Ligand for the Cu-catalyzed enantioselective oxy-alkynylation of diazo compounds.
6. Ligand used in the synthesis of enantioenriched allylic silanes via Ni-catalyzed reductive cross-coupling.
7. Ligand for the Cu-catalyzed enantioselective phosphinocyanation of alkenes.
8. Ligand for photoredox/Cu-catalyzed enantioselective radical ring-opening cyanation of oxime esters.
9. Ligand used in dialkylation of 1,3-dienes by dual photoredox and chromium catalysis.



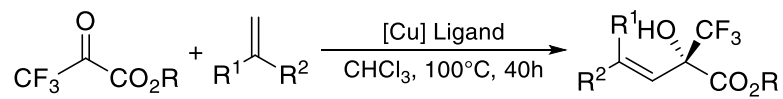
Tech. Note (1); Ref. (1)



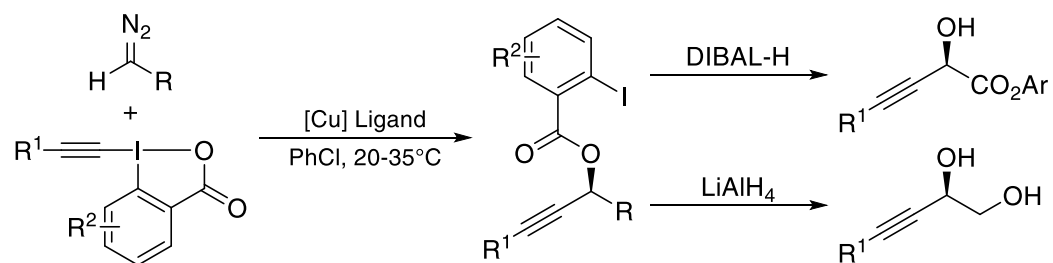
Tech. Note (2); Ref. (2)



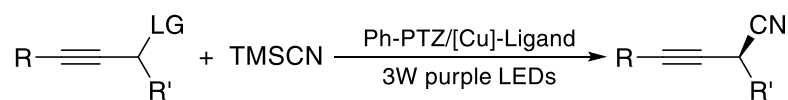
Tech. Note (3); Ref. (3)



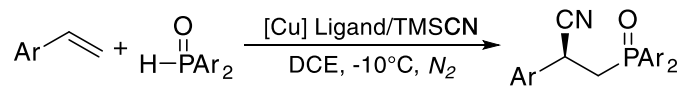
Tech. Note (4); Ref. (4)



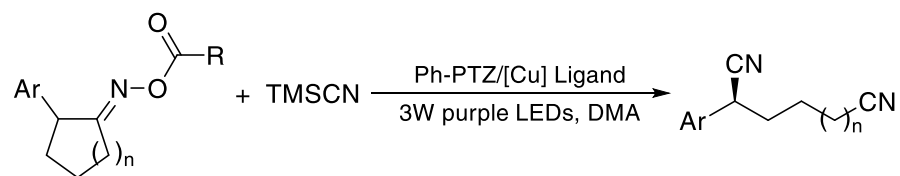
Tech. Note (5); Ref. (5)



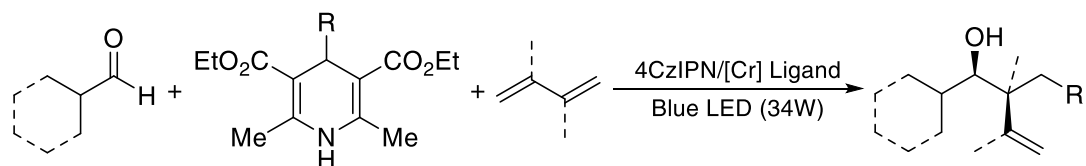
Tech. Note (6); Ref. (6)



Tech. Note (7); Ref. (7)



Tech. Note (8); Ref. (8)



Tech. Note (9); Ref. (9)

References:

1. *Org. Lett.*, **2008**, *10*, 5349.
2. *Angew. Chem. Int. Ed.* **2010**, *49*, 5558.

3. *Angew. Chem. Int. Ed.* **2011**, *50*, 10429.
4. *J. Org. Chem.* **2016**, *81*, 3929.
5. *J. Am. Chem. Soc.* **2017**, *139*, 8420.
6. *J. Am. Chem. Soc.* **2019**, *141*, 6167.
7. *Org. Lett.* **2019**, *21*, 5015.
8. *Org. Lett.* **2019**, *21*, 9763.
9. *ACS Catal.*, **2020**, *10*, 1621