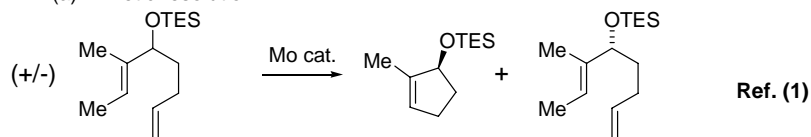


Catalog #42-1214 2,6-Diisopropylphenylimidoneophylidene[(S)-(-)-BIPHEN]molybdenum(VI), min. 97%
(S) SCHROCK-HOVEYDA CATALYST

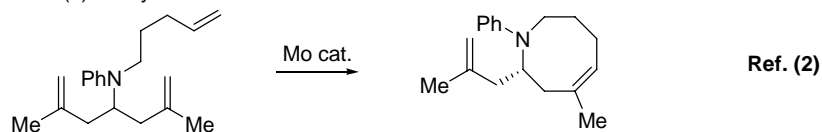
Technical Note:

1. The new Schrock-Hoveyda, chiral molybdenum catalyst can effect various modes of enantioselective olefin metathesis with excellent selectivity.

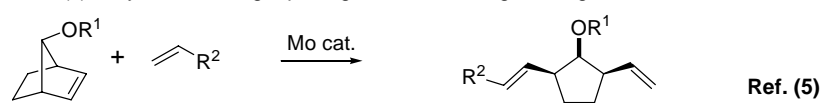
(a) Kinetic resolution.



(b) Desymmetrization of tri- or tetraenes.



(c) Asymmetric Ring-Opening metathesis/Ring-Closing metathesis.



References:

1. *J. Am. Chem. Soc.*, **1998**, 120, 4041.
2. *J. Am. Chem. Soc.*, **2005**, 127, 8526.
3. *Chem. Eur. J.*, **2001**, 7, 945. (review)
4. *Angew. Chem. Int. Ed.*, **2003**, 42, 4592. (review)
5. *J. Am. Chem. Soc.*, **1999**, 121, 11603.
6. *J. Am. Chem. Soc.*, **2006**, 128, 5153.
7. *Angew. Chem. Int. Ed.*, **2007**, 46, 4534.