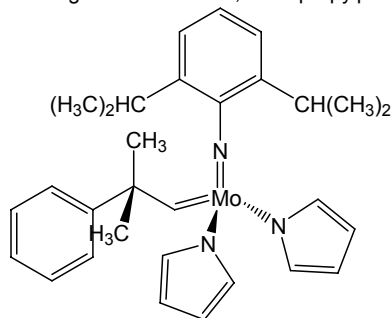


Catalog # 42-1211 2,6-Di-*i*-propylphenylimidoneophylidene(dipyrrolyl)molybdenum(VI) dimer

Technical Note:

1. Precursor for the preparation of a new class of chiral metathesis catalysts.

References:

1. *J. Am. Chem. Soc.*, **2009**, *131*, 943.
2. *J. Am. Chem. Soc.*, **2009**, *131*, 3844.