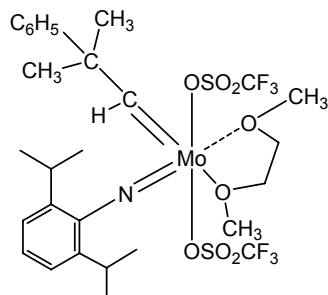


Catalog #42-1210 2,6-Diisopropylphenylimidoneophylidene molybdenum(VI) bis(trifluoromethanesulfonate) dimethoxyethane adduct

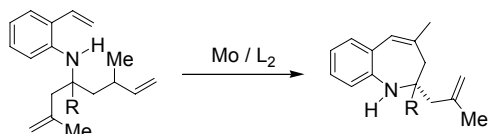


Note:

This material is covered under US Patents 4,681,956 and 4,727,215 and their foreign equivalents owned by Massachusetts Inst. of Technology.

Technical Notes:

1. Starting material for the preparation of other "ROMP" catalysts. Catalysts can be prepared (even *in situ*) by adding the appropriate alkoxide, including enantiomerically pure alkoxide ligands such as 3,3'-disubstituted binaphtholates or tartrates.
2. Asymmetric ring closing metathesis of amines.



**Tech. Note (2)
Ref. (3)**

References:

1. *J. Am. Chem. Soc.*, **1993**, 115, 4413.
2. *Angew. Chem. Int. Ed.*, 2001, 40, 1452.
3. *Org. Lett.*, 2003, 5, 4899.