

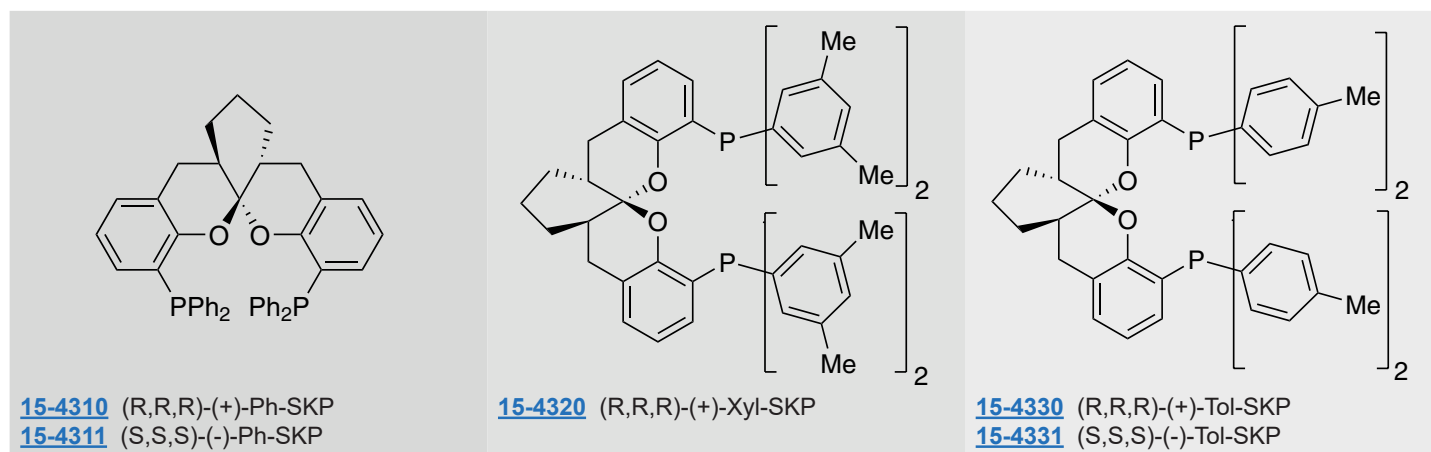


SKP Ligand Kit: Catalog # 96-2310

For asymmetric-allylic amination and cyclopropanation

Components available for individual sale.

Contains the following:

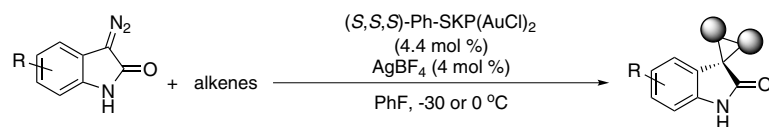


15-4310 (+)-1,13-Bis(diphenyl)phosphino-(5aR,8aR,14aR)-5a,6,7,8,8a,9-hexahydro-5H-[1]benzopyrano [3,2-d]xanthene, 97% (R,R,R)-(+)-Ph-SKP (1360823-43-3)
 $C_{44}H_{38}O_2P_2$; FW: 660.72; white solid; m.p. 101-103°
air sensitive
 Note: Sold in collaboration with SIOC for research purposes only. Patents PCT/CN2013/071091, CN202110253896.5. SKP Ligand Kit component.

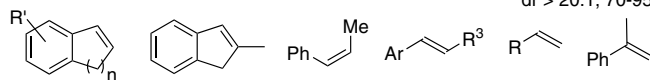
25mg
100mg

Technical Notes:

- Efficient ligand for the Au(I)-catalyzed, highly stereoselective, olefin cyclopropanation of diazooxindoles.
- Palladium-catalyzed asymmetric allylic amination of Morita-Baylis-Hillman adducts. Exceptionally high efficiency and new mechanism.
- See also 15-4320.

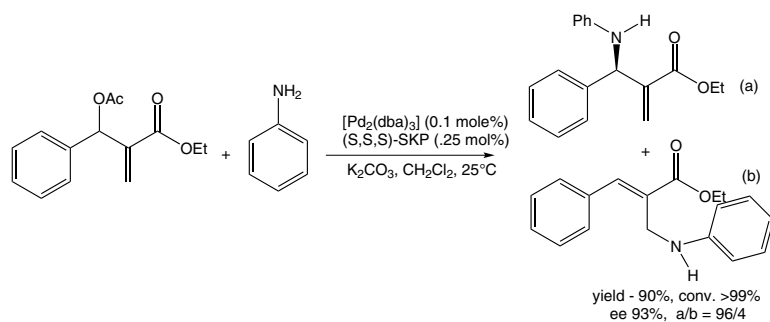


Alkene profiles



32 examples, 18-98% yield
dr > 20:1, 70-95% ee

Tech. Note (1)
Ref. (1)



Tech. Note (2)
Ref. (2)

References:

1. *J. Am. Chem. Soc.*, **2013**, *135*, 8197.
2. *J. Am. Chem. Soc.*, **2014**, *136*, 405.
3. *Angew. Chem., Int. Ed.* **2012**, *51*, 936.

15-4311 (-)-1,13-Bis(diphenyl)phosphino-(5aS,8aS,14aS)-5a,6,7,8,8a,9-hexahydro-5H-[1]benzopyrano [3,2-d]xanthene, 97% (S,S,S)-(-)-Ph-SKP (1439556-82-7)
 $C_{44}H_{38}O_2P_2$; FW: 660.72; white solid; m.p. 101-103°
air sensitive
 Note: Sold in collaboration with SIOC for research purposes only. Patents PCT/CN2013/071091, CN202110253896.5. SKP Ligand Kit component.

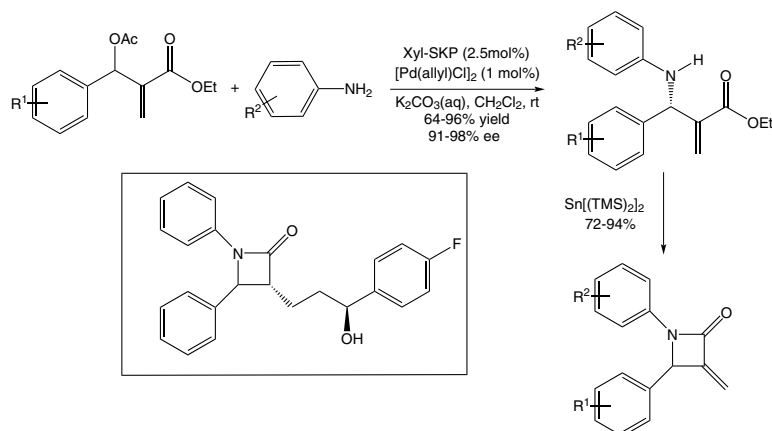
Technical Note:

1. See 15-4310 (page 1)

15-4320 (+)-1,13-Bis[di(3,5-dimethylphenyl)phosphino]-(5aR,8aR,14aR)-5a,6,7,8,8a,9-hexahydro-5H-[1]benzopyrano[3,2-d]xanthene, 97% (R,R,R)-(+)-Xyl-SKP (1429939-35-4)
 $C_{52}H_{54}O_2P_2$; FW: 772.93; white solid; m.p. 102-103°
air sensitive
 Note: Sold in collaboration with SIOC for research purposes only. Patents PCT/CN2013/071091, CN202110253896.5. SKP Ligand Kit component.

Technical Notes:

1. Efficient ligand for the palladium-catalyzed, asymmetric allylic amination of racemic Morita-Baylis-Hillman adducts.
2. See also 15-4311.



Tech. Note (1)
 Ref. (1,2)

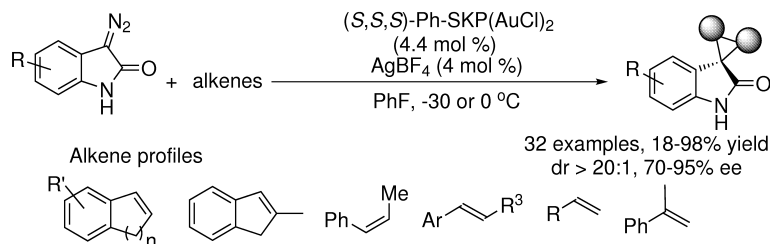
References:

1. *Angew. Chem. Int. Ed.*, **2012**, *51*, 9276.
2. *Angew. Chem. Int. Ed.*, **2012**, *51*, 936.

15-4330 (+)-1,13-Bis[di(4-methylphenyl)phosphino]-(5aR,8aR,14aR)-5a,6,7,8,8a,9-hexahydro-5H-[1]benzopyrano[3,2-d]xanthene, 97% (R,R,R)-(+)-Tol-SKP (1429939-32-1)
 $C_{48}H_{46}O_2P_2$; FW: 716.83; white solid; m.p. 90-92°
air sensitive
 Note: Sold in collaboration with SIOC for research purposes only. Patents PCT/CN2013/071091, CN202110253896.5. SKP Ligand Kit component.

Technical Notes:

1. Efficient ligand for the Au(I)-catalyzed, highly stereoselective, olefin cyclopropanation of diazooxindoles.
2. See also 15-4320.



Tech. Note (1)
 Ref. (1)

References:

1. *J. Am. Chem. Soc.*, **2013**, *135*, 8197.
2. *Angew. Chem., Int. Ed.* **2012**, *51*, 936.

15-4331 (-)-1,13-Bis[di(4-methylphenyl)phosphino]-(5aS,8aS,14aS)-5a,6,7,8,8a,9-hexahydro-5H-[1]benzopyrano[3,2-d]xanthene, 97% (S,S,S)-(-)-Tol-SKP (1548897-80-8)
 $C_{48}H_{46}O_2P_2$; FW: 716.83; white powder; m.p. 90-92°
air sensitive
 Note: Sold in collaboration with SIOC for research purposes only. Patents PCT/CN2013/071091, CN202110253896.5. SKP Ligand Kit component.

Technical Note:

1. See 15-4330 (Page 2)



Headquartered in Bellevue, WA, **Ascensus Specialties is the global leader in catalysts, ligands, building blocks, and specialty reagents.** Our 60+ years of synthetic knowhow, allows us to bring additional value to our clients through our custom synthesis and cGMP services. From world-class production plants in Elma, WA, Evans City, PA, Newburyport, MA, and Cambridge, UK, Ascensus has a global reach that ensures our clients can consistently manufacture their products to the highest standards.

▶ **THE ASCENSUS ADVANTAGE**

60+ Years Of Experience

Custom-Tailored Purity And Impurity Profiles

Commercial GMP Capabilities

Supply Chain Development

Process Control And Robustness

Bioburden Control

CONTACT

P +1 · 800 · 647 · 8736
E info@ascensuspecialties.com
U www.strem.com
U www.ascensuspecialties.com



COPORATE OFFICE

Ascensus Specialties
2821 Northup Way, Suite 275
Bellevue, WA 98004



MANUFACTURING FACILITIES

4800 State Route 12
Elma, WA 98541

1424 Mars-Evans City Rd
Evans City, PA 16033

7 Mulliken Way
Newburyport, MA 01950

Haverhill Road,
Stradishall Newmarket
Suffolk, CB8 9EX