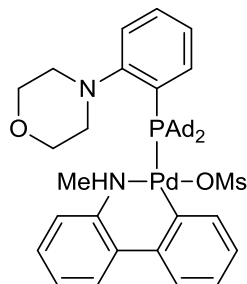


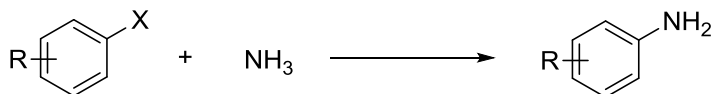
Catalog # 46-0940

Methanesulfonato(N-[2-(di-1-adamantylphosphino)phenyl]morpholine)(2'-methylamino-1,1'-biphenyl-2-yl)palladium(II) dichloromethane adduct, min. 98% MorDalPhos Palladacycle Gen. 4



Technical Notes:

1. Palladium catalyst for ammonia arylation.
2. Palladium catalyst for multicomponent one-pot synthesis of indoles.
3. Palladium catalyst for primary aliphatic amination of aryl mesylates.
4. Palladium catalyst for ketone mono- $\alpha$ -arylation of aryl mesylates

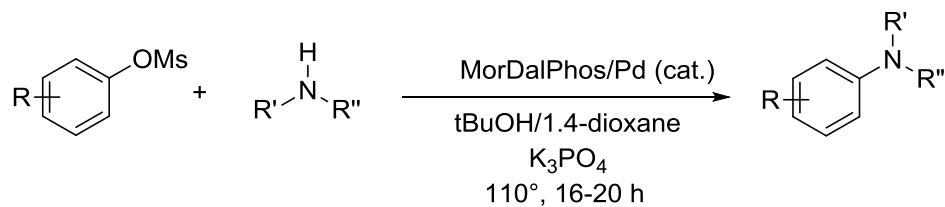


**Tech. Note (1)**  
**Ref. (1)**

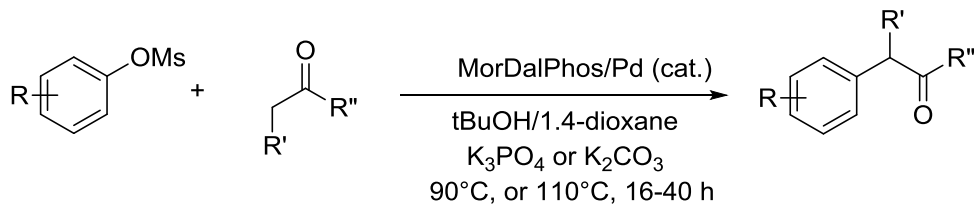
X = Cl or OTs  
R = electron-donating  
or withdrawing group



**Tech. Note (2)**  
**Ref. (2)**



**Tech. Note (3)**  
**Ref. (3)**



**Tech. Note (4)**  
**Ref. (3)**

References:

1. *Angew. Int. Ed.*, **2010**, 49, 4071.
2. *Angew. Int. Ed.*, **2013**, 52, 7242.
3. *Adv. Synth. Catal.*, **2015**, 357, 100.