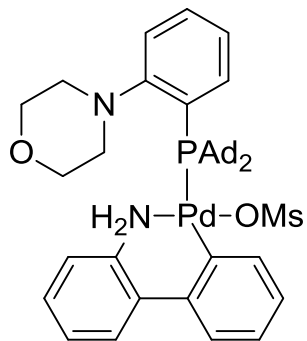


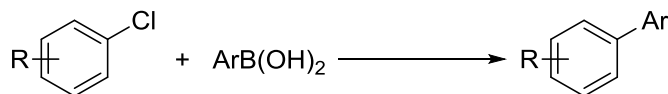
Catalog # 46-0935 Methanesulfonato{N-[2-(di-1-adamantylphosphino)phenyl]morpholine}(2'-amino-1,1'-biphenyl-2-yl)palladium(II) dichloromethane adduct, min. 98% [Mor-Dalpos Palladacycle Gen. 3]



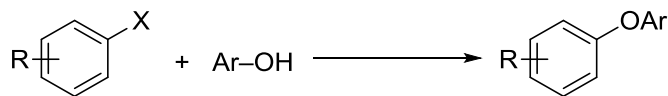
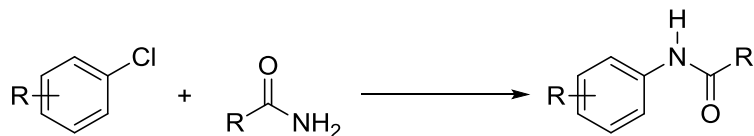
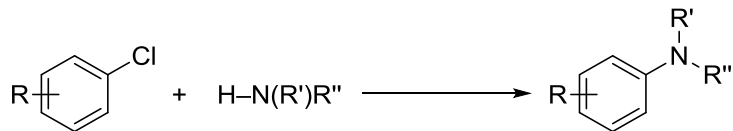
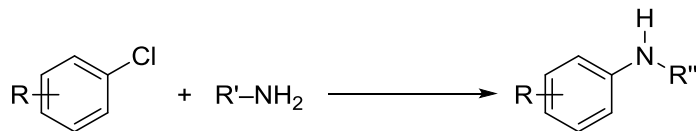
Technical Note:

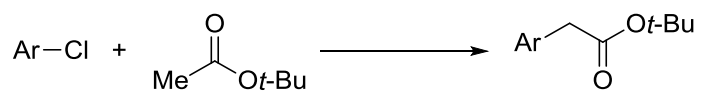
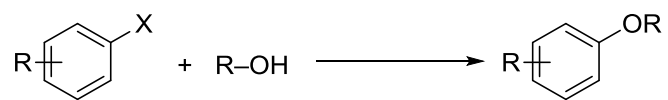
1. Palladium precatalyst for general C–C and C–N cross-coupling reactions:

- a. Suzuki-Miyaura coupling reactions

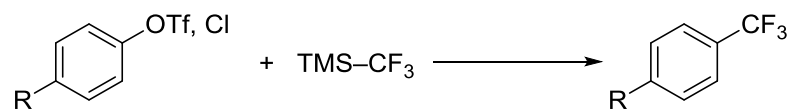
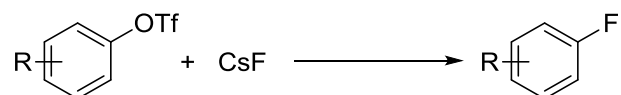


- b. Arylation reactions of primary amines, secondary amines, primary amides, phenols, alcohols, tert-butyl acetate





c. Fluorination reactions



Reference:

1. *Chem. Sci.*, **2013**, 4, 916.