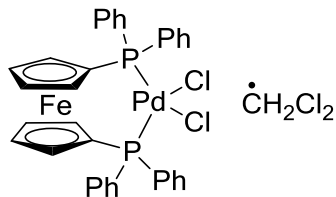


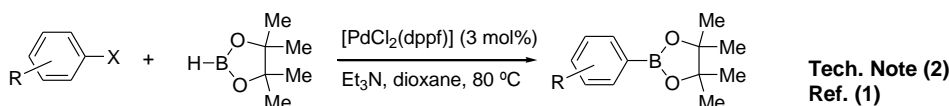
Catalog # 46-0450 Dichloro 1,1'-bis(diphenylphosphino)ferrocene palladium (II) dichloromethane, 99%



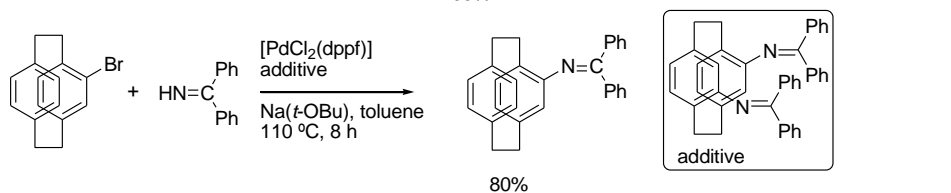
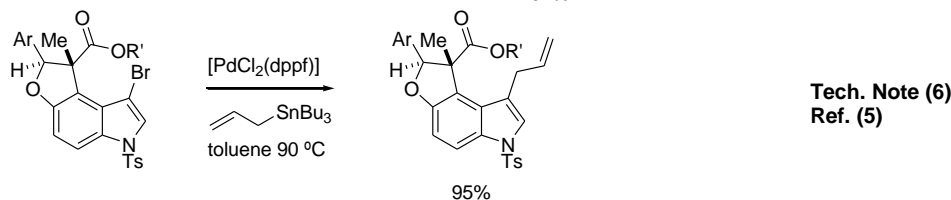
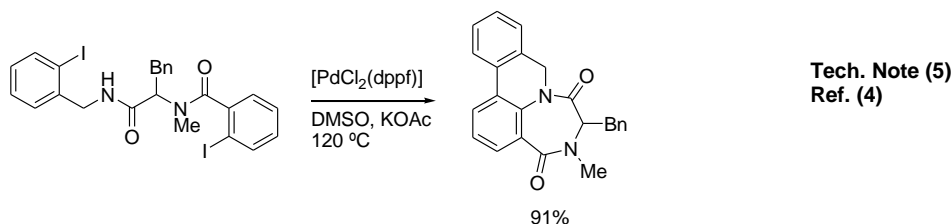
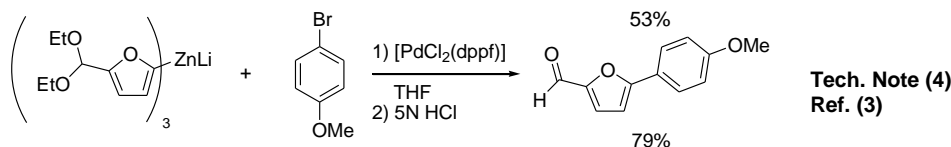
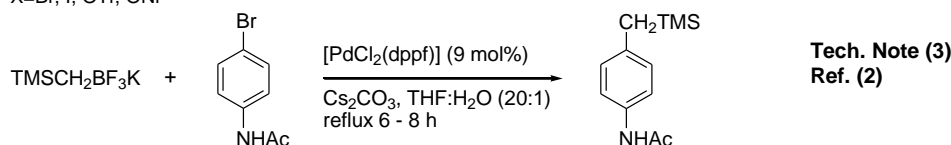
Note: Dichloro[1,1'-bis(dialkyl/diarylphosphino)ferrocene]palladium(II) Catalyst Kit component.

Technical Notes:

1. See [26-0270](#).
2. Catalyst for the borylation of aryl halides.
3. β -Alkyl Suzuki-Miyaura cross-coupling reactions with potassium alkyltrifluoroborates.
4. Catalyst for modified Negishi coupling.
5. Synthesis of polyheterocycles by a Pd-catalyzed intramolecular N-arylation/C-H bond activation/aryl-aryl bond-forming domino process.
6. Catalyst for Stille allylation.
7. Catalyst for the amination of aryl bromides.



X=Br, I, OTf, ONf



References:

1. *J. Org. Chem.*, **2000**, 65, 164.
2. *J. Org. Chem.*, **2003**, 74, 5534.
3. *Org. Lett.*, **2002**, 4, 375.
4. *Angew. Chem. Int. Ed.*, **2003**, 42, 4774.
5. *J. Am. Chem. Soc.*, **2008**, 130, 16854.
6. *J. Org. Chem.*, **2009**, 74, 6867.