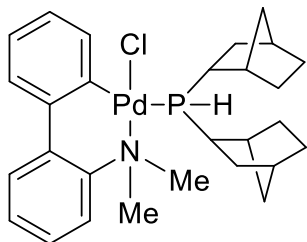


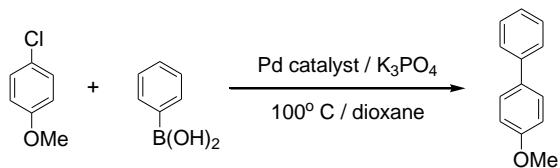
Catalog # 46-0270 Chloro(di-2-norbornylphosphino)(2'-dimethylamino-1,1'-biphenyl-2-yl)palladium(II), min. 95%



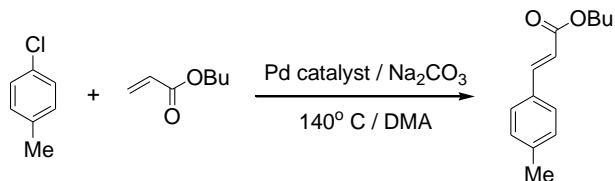
Note: Sold in collaboration with Solvias for research purposes only.

Technical Note:

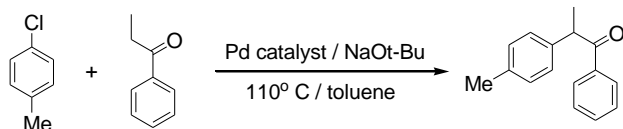
1. A new, air and moisture-stable, palladium catalyst useful in a broad scope of C-C and C-N coupling reactions. The highly-active catalyst can tolerate substrates containing a wide variety of functional groups such as alkyls, alkoxides, ketones, aldehydes, esters, amines, trifluoromethyl and nitro groups.



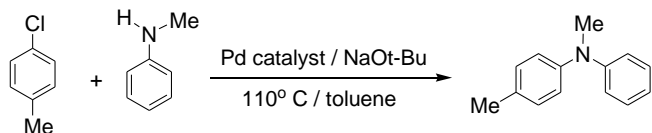
GC yield: 95%



GC yield: 97%



GC yield: 97%
Isolated yield: 80%



GC yield: 96%
Isolated yield: 85%

References:

1. Solvias A.-G., EP1132361.
2. *Angew. Chem. Int. Ed.*, **2002**, 41, 3668.