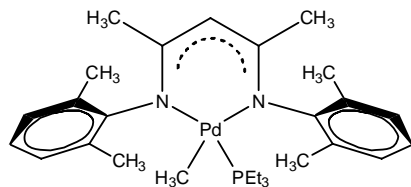
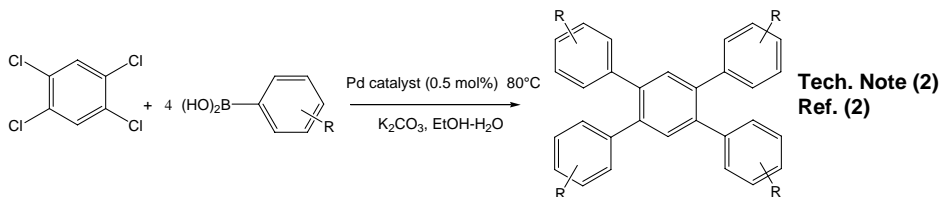
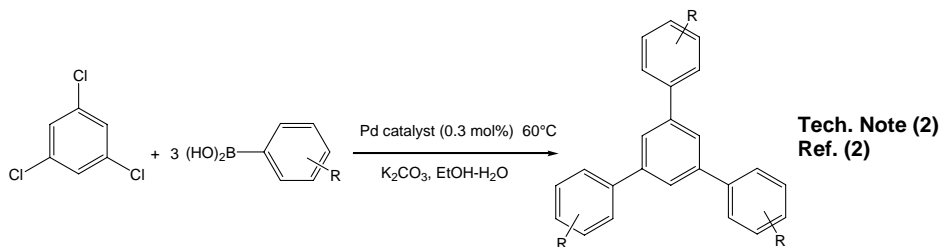
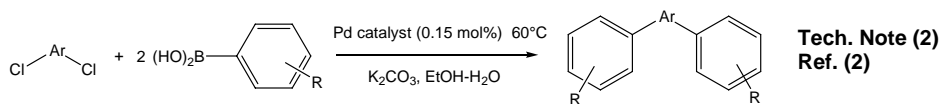
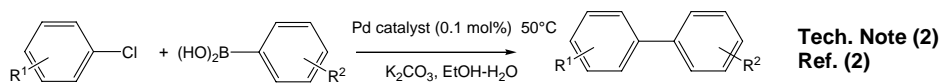
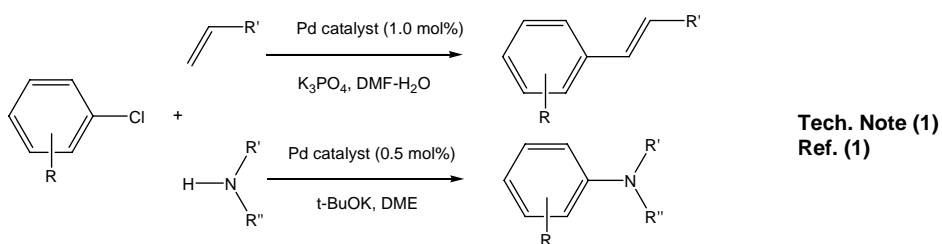


Catalog #46-0230 N,N'-[Bis(2,6-dimethylphenyl)-1,3-dimethyl-1,3-propanediylidene](methyl) (triethylphosphine)palladium (II), min. 97%



#### Technical Notes:

1. Catalyst used in the general method for the Heck and Buchwald-Hartwig coupling reactions of aryl chlorides.
2. Extremely active and general catalyst for the Suzuki coupling reaction of unreactive aryl chlorides.



#### References:

1. *Org. Lett.*, **2011**, *13*, 5540.
2. *Org. Lett.*, **2011**, *13*, 252.