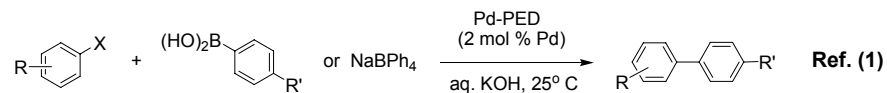
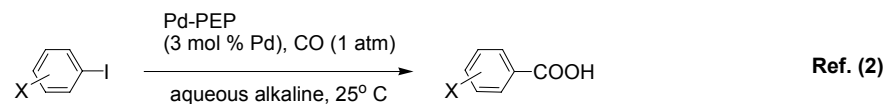
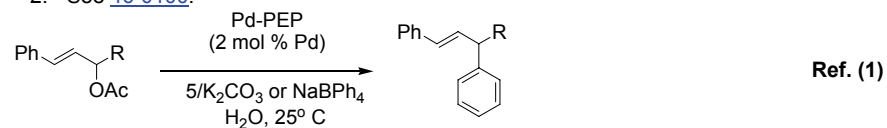


Catalog # 46-0101 Allylpalladium chloride dimer, supported on poly(ethylene glycol)polystyrene graft copolymer beads  
[~6% (C<sub>3</sub>H<sub>5</sub>PdCl)<sub>2</sub>]

Technical Notes:

1. Resin supported Allylpalladium chloride dimer is a highly active catalyst useful in allylic substitution reactions, hydrocarbonylation of aryl halides, and cross-coupling of aryl halides and allylacetates with aryl boron reagents. The supported complex can easily be separated from the reaction mixture, and is reusable.
2. See [46-0100](#).



References:

1. *J. Org. Chem.*, **1999**, 64, 3384.
2. *J. Org. Chem.*, **1999**, 64, 6921.