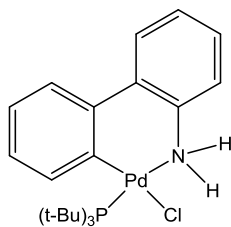
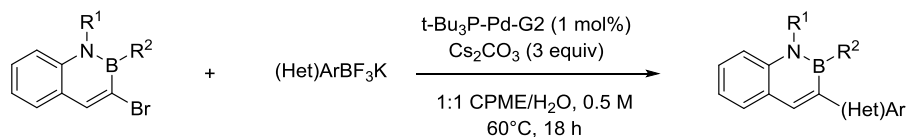


Catalog # 46-0028 Chloro(tri-t-butylphosphine)(2'-amino-1,1'-biphenyl-2-yl)palladium(II), min. 98%



Technical Note:

1. Catalyst for the Suzuki Coupling of brominated 2,1-borazonaphthalenes and potassium organotrifluoroborates



Tech. Note (1)
Ref. (1)

>20 Brominated Azaborines

R¹ = H, alkyl

R² = alkyl, aryl, heteroaryl

References:

1. *J. Org. Chem.* **2014**, *79*, 6663