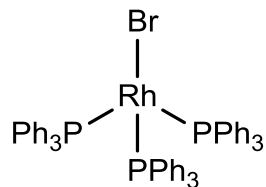
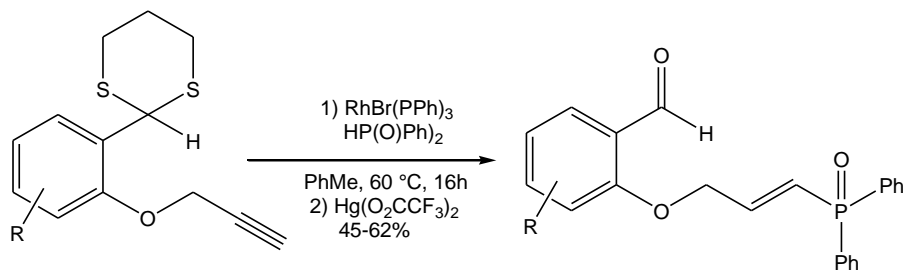


Catalog # 45-0655 Bromo(triphenylphosphine)rhodium(I), 99%

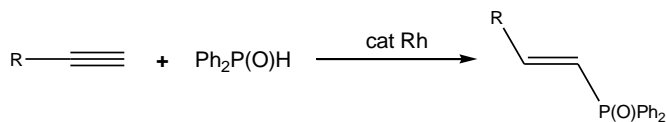


**Technical Notes:**

1. Rhodium-catalyzed regio- and stereoselective addition of diphenylphosphine oxide to alkynes.
2. Rhodium-catalyzed hydrophosphinylation.



**Tech. Note (1)**  
**Ref. (1)**



**Tech. Note (2)**  
**Ref. (2)**

**References:**

1. *Org. Lett.*, **2008**, *10*, 3141.
2. *J. Org. Chem.*, **2001**, *66*, 5929.