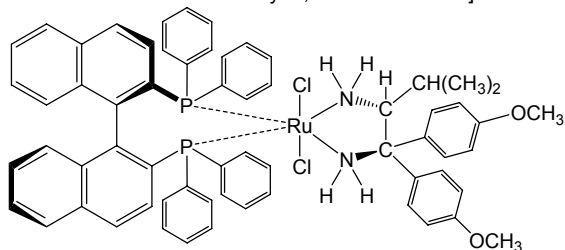
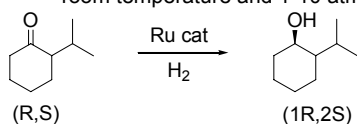


Catalog # 44-0210 Dichloro[(R)-(+)-2,2'-bis(diphenylphosphino)-1,1'-binaphthyl][(2R)-(-)-1,1-bis(4-methoxyphenyl)-3-methyl-1,2-butanediamine]ruthenium(II) dichloromethane adduct, min. 97%

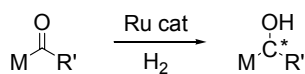


**Technical Note:**

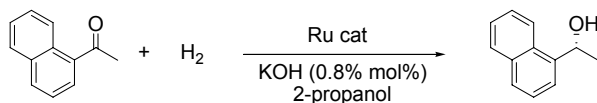
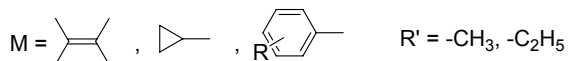
- The NOYORI catalysts are a ruthenium-based system containing a phosphine and 1,2-diamine ligand. The catalysts are used in the highly-efficient, enantio and diastereoselective hydrogenation of simple ketones, usually under the mild conditions of room temperature and 1-10 atm of hydrogen pressure.



**Ref. (1)**



**Ref. (2,3)**



**Ref. (4)**

**References:**

- J. Org. Chem.*, **1996**, 61, 4872.
- Angew. Chem. Int. Ed.*, **2001**, 40, 40 (review article).
- J. Am. Chem. Soc.*, **1998**, 120, 13529.
- Angew. Chem. Int. Ed.*, **1999**, 38, 495.