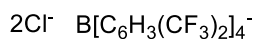
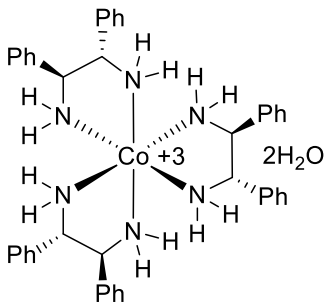
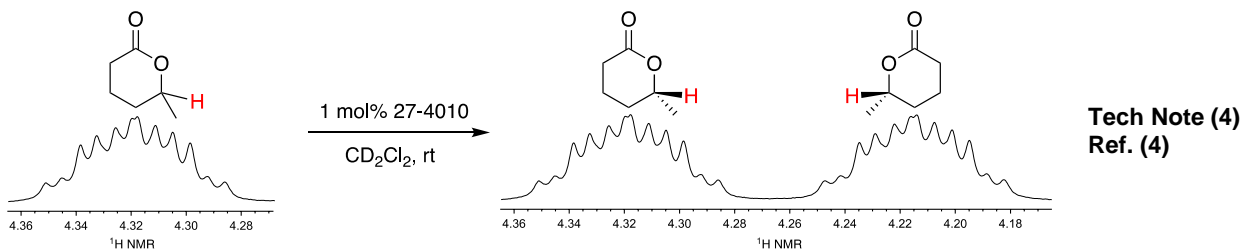
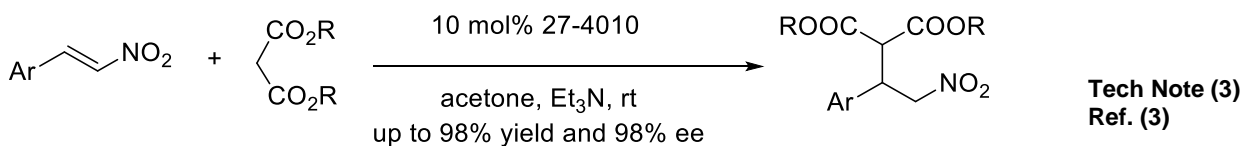
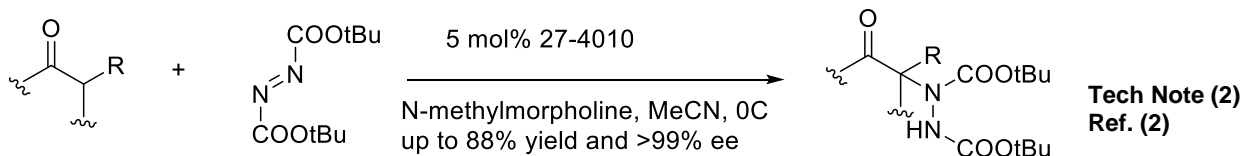
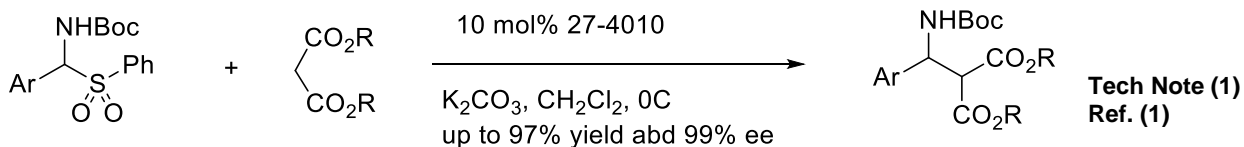


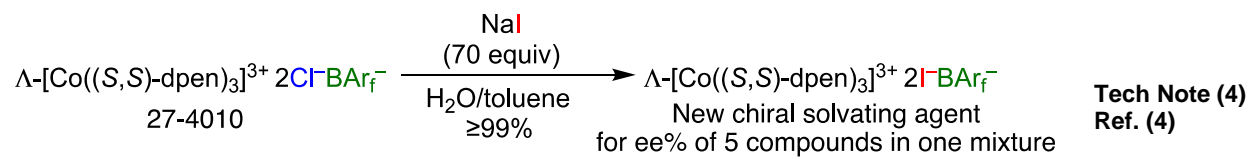
Catalog # 27-4010 lambda-Tris[(1S,2S)-1,2-diphenyl-1,2-ethanediamine]cobalt(III) chloride tetrakis[3,5-bis(trifluoromethyl)phenyl]borate dihydrate SKJ-1



Technical Notes:

1. Enantioselective additions of stabilized carbanions to imines generated from α -amido sulfones.
2. Chiral hydrogen bond donor catalysts for enantioselective α -aminations of 1,3-dicarbonyl compounds.
3. Catalysts for enantioselective organic synthesis.
4. Chiral solvating agents for determining ee%.





References:

1. *Synthesis*, **2017**, 49, 3905-3915.
2. *Org. Lett.*, **2016**, 18, 760.
3. *ACS Cent. Sci.*, **2015**, 1, 50.
4. *Chem. Sci.*, **2018**, 9, 5087-5099.