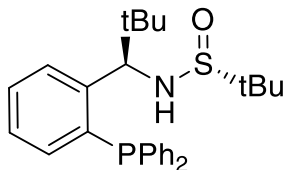
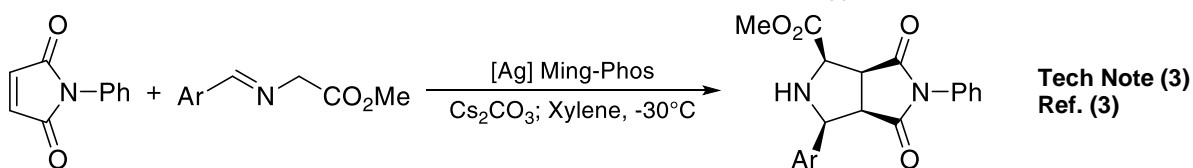
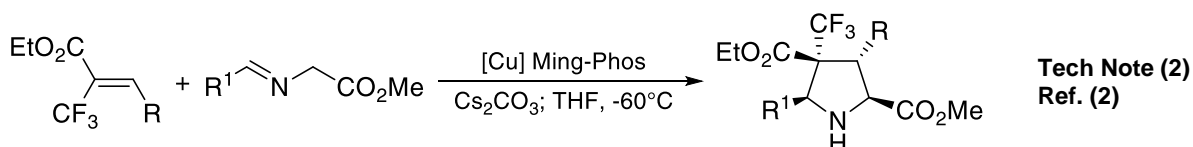
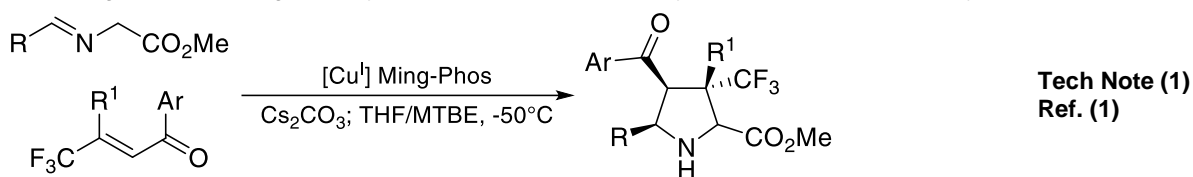


Catalog # 15-8330 [S(R)]-N-[(1R)-1-[2-(Diphenylphosphino)phenyl]-2,2-dimethylpropyl]-2-methyl-2-propanesulfonamide, 98%



#### Technical Notes:

1. Ligand used for diastereo- and enantioselective Cu(I)-catalyzed intermolecular [3+2] cycloaddition of azomethine ylides with  $\beta$ -trifluoromethyl  $\beta$ ,  $\beta$ -Disubstituted enones.
2. Ligand used in the Copper(I)-catalyzed asymmetric intermolecular [3+2] cycloaddition of azomethine ylides with  $\alpha$ -Trifluoromethyl  $\alpha,\beta$ -unsaturated esters.
3. Ligand used for Ag(I)-catalyzed enantioselective [3+2] cycloaddition of azomethine ylides.



#### References:

1. *Angew. Chem. Int. Ed.* **2016**, *55*, 6324.
2. *ACS Catal.* **2017**, *7*, 210.
3. *Org. Biomol. Chem.*, **2019**, *17*, 1395.