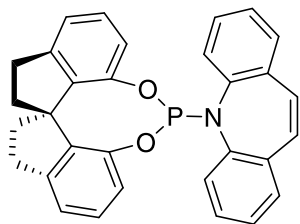
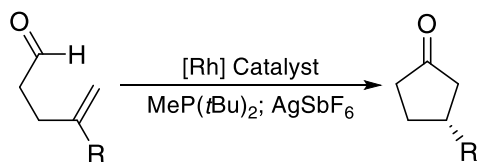


Catalog # 15-5626 Carbonylchlorohydrido[bis(2-di-cyclohexylphosphinoethyl)amine]ruthenium(II), min. 97%

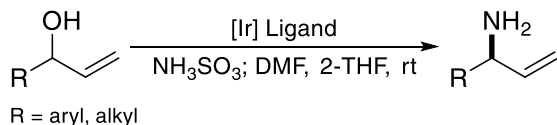


**Technical Notes**

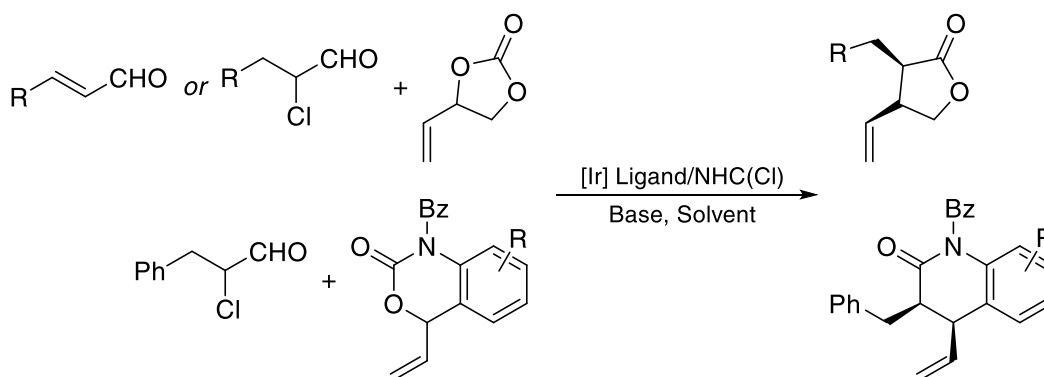
1. Ligand for the Rh-catalyzed asymmetric intramolecular hydroacylation.
2. Ligand for the enantioselective Ir-catalyzed allylic amination of racemic allylic alcohols.
3. Used in the diastereodivergent synthesis of enantioenriched  $\alpha,\beta$ -disubstituted  $\gamma$ -butyrolactones via cooperative Ir/NHC-catalyzed cis-selective [3+2] and [4+2] annulation reactions.



**Tech. Note (1); Ref. (1)**



**Tech. Note (2); Ref. (2)**



**Tech. Note (3); Ref. (3)**

**References:**

1. *Angew. Chem. Int. Ed.* **2011**, *50*, 10670.
2. *Angew. Chem. Int. Ed.* **2012**, *51*, 3470.
3. *Nat. Catal.*, **2020**, *3*, 48.