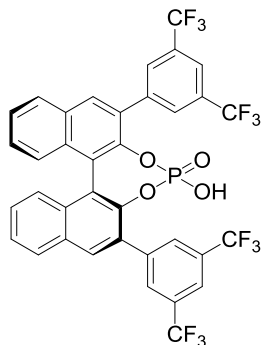
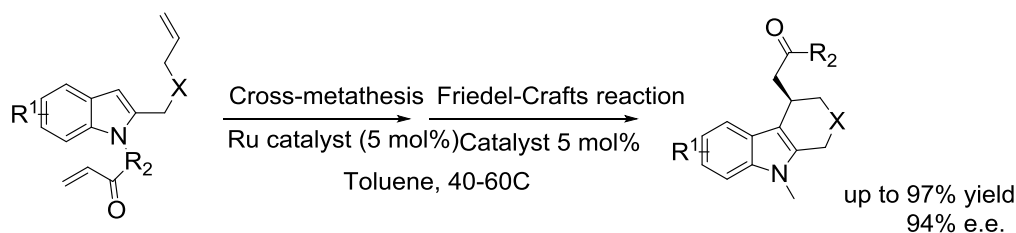


Catalog # 15-1367 (11bS)-2,6-Bis[3,5-bis(trifluoromethyl)phenyl]-4-hydroxy-4-oxide-dinaphtho[2,1-d:1',2'-f][1,3,2]dioxaphosphepin, 98%, (99% ee)



Technical Note:

1. **Friedel-Crafts Alkylation:** Chiral phosphoric acids were used as catalysts for the Friedel-Crafts alkylations of indolyl enones while both a ruthenium complex and chiral phosphoric acids were used as catalysts for sequential olefin cross-metathesis and Friedel-Crafts alkylations of allyloxymethyl or allylaminomethyl indoles and enones.



Reference:

1. *Angew. Chem. Int. Ed.*, **2009**, 48, 7428-7431.