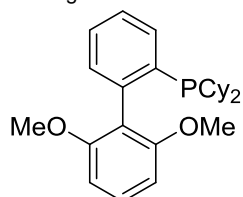


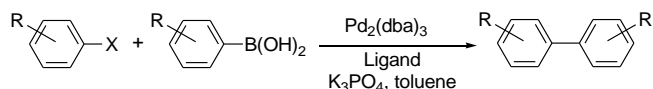
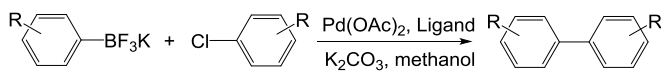
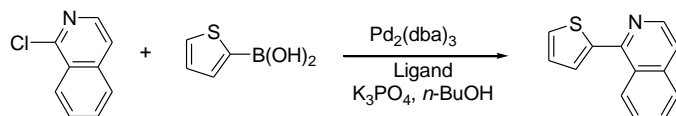
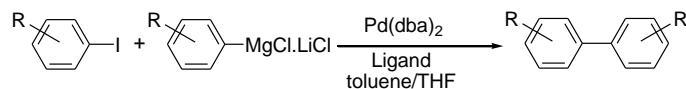
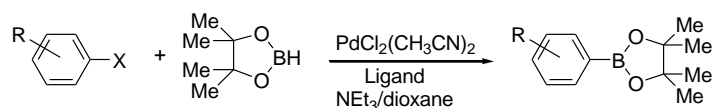
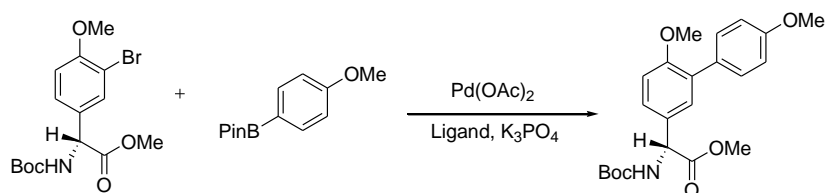
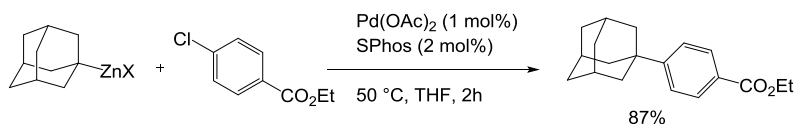
Catalog # 15-1143 2-Dicyclohexylphosphino-2',6'-dimethoxy-1,1'-biphenyl, min. 98% SPhos

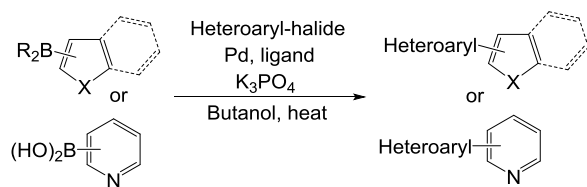


Note: Buchwald Biaryl Phosphine Ligand Kit component. Patents US 6,395,916, US 6,307,087.

## Technical Notes:

1. Ligand/palladium catalyst for general Suzuki-Miyaura cross-coupling reactions.
2. Ligand/palladium catalyst for the Suzuki-Miyaura coupling of aryltrifluoroborates with aryl chlorides.
3. Ligand/palladium catalyst for the Suzuki-Miyaura reaction of heteroaryl halides and heteroaryl boronic acids and esters.
4. Ligand/palladium catalyst for the Kumada-Corriu cross-coupling reaction.
5. Ligand/palladium catalyst for the borylation of aryl halides with pinacol borane.
6. Suzuki couplings involving amino acids. Synthesis of biaryl derivatives of 4-hydroxyphenyl glycine, tyrosine and tryptophan.
7. Synthesis of substituted adamantylzinc reagents using Mg-insertion in the presence of zinc chloride.
8. Highly efficient catalyst for the palladium-catalyzed Suzuki-Miyura reaction of heteroaryl halides and heteroaryl boronic acids and esters.

Tech. Note (1)  
Ref. (1)Tech. Note (2)  
Ref. (2)Tech. Note (3)  
Ref. (3)Tech. Note (4)  
Ref. (4)Tech. Note (5)  
Ref. (5)Tech. Note (6)  
Ref. (5)Tech. Note (7)  
Ref. (6)



**Tech. Note (8)**  
**Ref. (3)**

References:

1. *Angew. Chem., Int. Ed.*, **2004**, 43, 1871.
2. *Org. Lett.*, **2004**, 6, 2649.
3. *J. Am. Chem. Soc.*, **2007**, 129, 3358.
4. *J. Am. Chem. Soc.*, **2008**, 129, 3844.
5. *J. Org. Chem.*, **2008**, 73, 5589.
6. *Org. Lett.*, **2014**, 16, 2418.