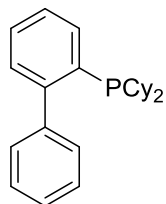


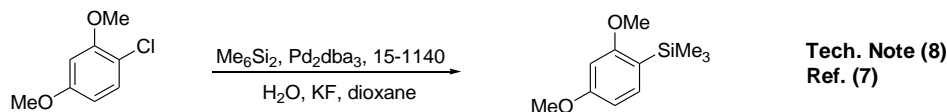
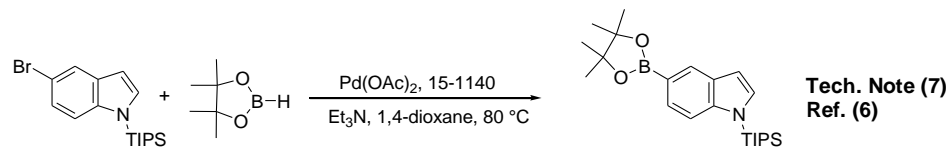
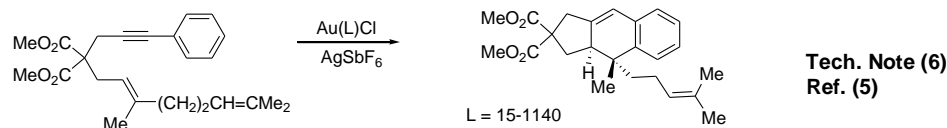
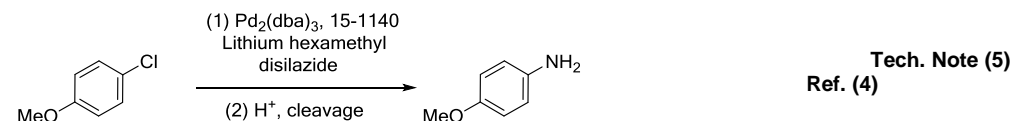
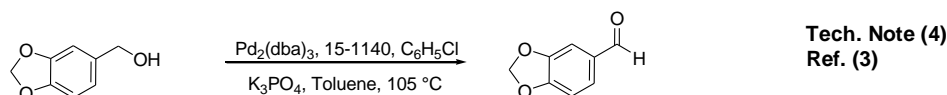
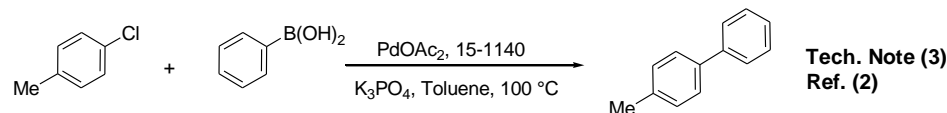
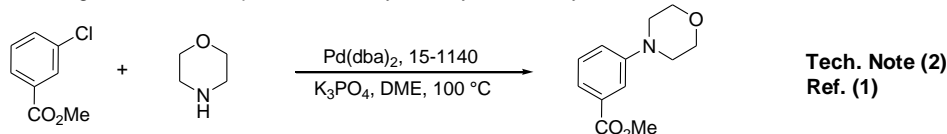
Catalog # 15-1140 2-(Dicyclohexylphosphino)-1,1'-biphenyl, 98% CyJohnPhos



Note: Buchwald Biaryl Phosphine Ligand Kit component. Patents US 6,395,916, US 6,307,087.

Technical Notes:

1. See [15-1045](#).
2. Ligand used in the palladium-catalyzed synthesis of aromatic amines from aryl chlorides, bromides and triflates.
3. Ligand employed in Suzuki coupling reactions involving aryl chlorides, bromides and triflates.
4. Useful ligand for the Pd-catalyzed oxidation of alcohols in the presence of chlorobenzenes.
5. Useful ligand for the Pd-catalyzed amination with ammonia equivalents.
6. Ligand for the gold(I)-catalyzed intramolecular [4+2] cycloadditions involving 1,3-enynes and arylalkynes with alkenes.
7. Ligand used in the palladium-catalyzed borylation of aryl bromides.
8. Ligand used in the palladium-catalyzed silylation of aryl chlorides.



References:

1. *J. Org. Chem.*, **2000**, 65, 1158.
2. *J. Am. Chem. Soc.*, **1999**, 121, 9550.
3. *Org. Lett.*, **2003**, 5, 2485.
4. *Org. Lett.*, **2001**, 3, 3417.
5. *J. Am. Chem. Soc.*, **2005**, 127, 6178.
6. *Helv. Chim. Acta.*, **2006**, 89, 936.
7. *Org. Lett.*, **2007**, 9, 3785.
8. [Chem. Sci.](#), **2011**, 2, 27.