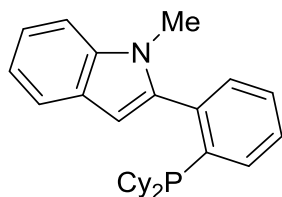
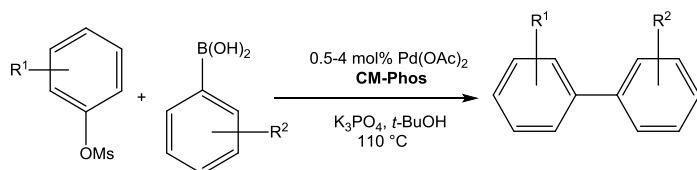


Catalog # 15-1088 2-[2-(Dicyclohexylphosphino)phenyl]-1-methyl-1H-indole, min. 98% CM-Phos

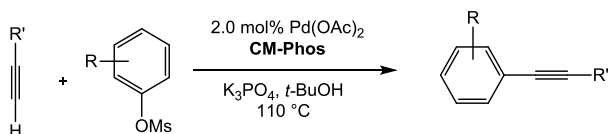


**Technical Notes:**

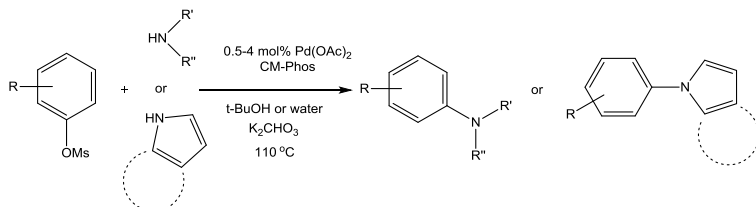
1. Suzuki-Miyaura Coupling of Aryl Mesylates and alkenyl tosylate and mesylate bearing alkyl, methoxy, aldehyde, keto, nitrile, ester, and heteroaryl substitution.
2. Sonogashira Coupling of Aryl Mesylates, R' = alkyl, aryl; R = C(O)R, COOMe, CHO, CN.
3. Buchwald-Hartwig Amination of Aryl Mesylates, R = cyano, chloro, methoxy, keto, ester and etc.
4. Additional catalyzed reactions include Cyanation of functional Aryl Mesylates and Chlorides (Ref. 4,5); Hiyama Coupling of Aryl Mesylates (Ref. 6); Direct Arylation of Heterocycles with Aryl Mesylates (Ref. 7); Borylation of Aryl Mesylates (Ref. 8).



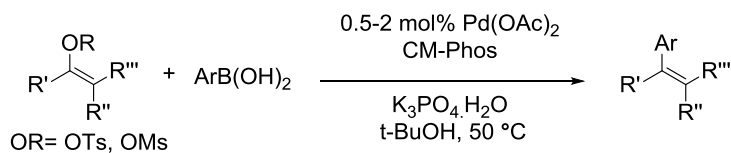
**Tech. Note (1)  
Ref. (1)**



**Tech. Note (2)  
Ref. (2)**



**Tech. Note (3)  
Ref. (3)**



**Tech. Note (1)  
Ref. (9)**

**References:**

1. *Angew. Chem. Int. Ed.*, **2008**, 47, 8059.
2. *Chem. Eur. J.*, **2010**, 16, 9982.
3. *Angew. Chem. Int. Ed.*, **2008**, 47, 6402.
4. *Angew. Chem. Int. Ed.*, **2010**, 49, 8918.
5. *Org. Lett.*, **2011**, 13, 648.
6. *Org. Lett.*, **2009**, 11, 317.
7. *Chem. Eur. J.*, **2011**, 17, 761.
8. *Chem. Eur. J.*, **2011**, 17, 6913.
9. *Chem. Commun.*, **2011**, 47, 8328.