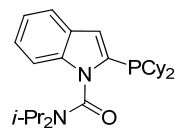
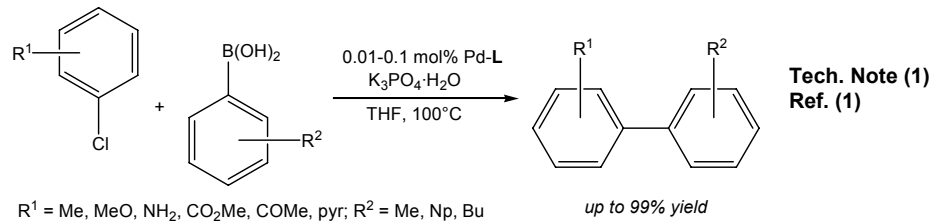


Catalog # 15-1086 2-(Dicyclohexylphosphino)-N,N-bis(1-methylethyl)-1H-indole-1-carboxamide, min. 98% Amidole-Phos



Technical Note:

1. Suzuki-Miyaura Coupling of Aryl Chlorides (low catalyst loading).



Reference:

1. *J. Org. Chem.* **2008**, *73*, 7803.