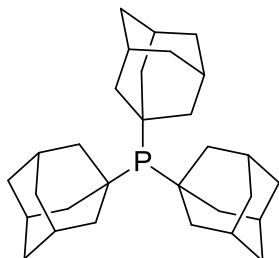
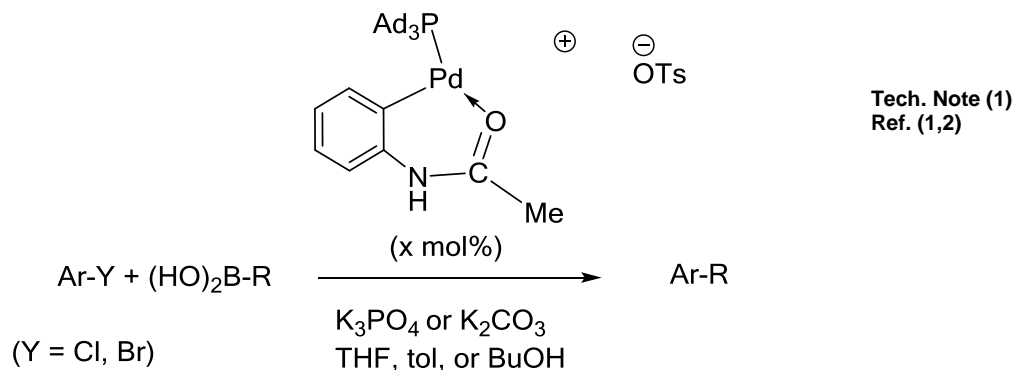


Catalog # 15-0935 Tris(1-adamantyl)phosphine, 97%



Technical Notes:

1. A stable phosphine ligand which can bind to metals such as palladium to be used in Suzuki-Miyaura couplings in making drug intermediates. Dramatic effects in catalysis are also accessible now by using PAd₃ as a ligand during Suzuki-Miyaura cross-coupling of chloro(hetero)arenes.^{1,2}



References:

1. *Synlett.*, **2017**, 28(3), 280-288.
2. *J. Am. Chem. Soc.*, **2016**, 138, 6392.