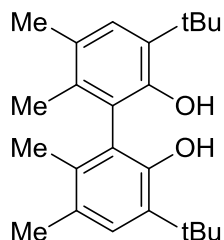


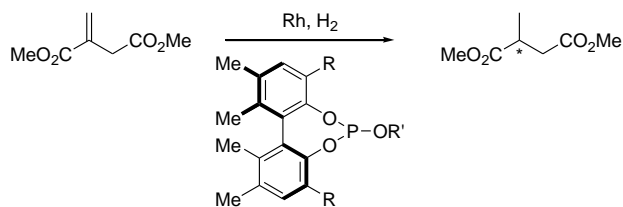
Catalog # 08-2045 racemic-5,5',6,6'-Tetramethyl-3,3'-di-t-butyl-1,1'-biphenyl-2,2'-diol, 99%
rac-BIPHEN H₂



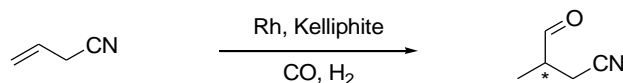
BIPHEN = 5,5',6,6'-Tetramethyl-3,3'-di-t-butyl-1,1'-biphenyl-2,2'-diol

Technical Notes:

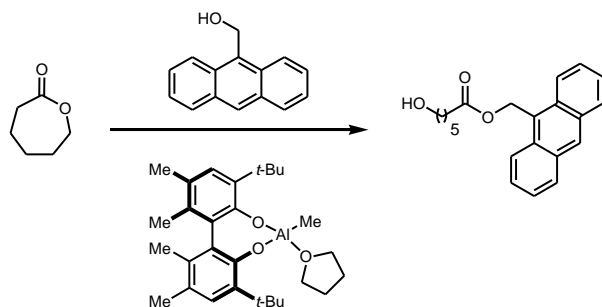
1. Used as a ligand backbone for metathesis catalysts (See [42-1212](#)).
2. Used as a ligand backbone in catalytic asymmetric hydrogenation.
3. Used as a ligand backbone for asymmetric hydroformylation of allyl cyanide.
4. Used as a ligand backbone for phosphoramidite ligands in the asymmetric Rh-catalyzed [2+2+2] cycloaddition.
5. Used as a ligand backbone for the ring-opening polymerization of cyclic esters.



Tech. Note (2)
Ref. (1)



Tech. Note (3)
Ref. (2)



Tech. Note (5)
Ref. (4,5)

References:

1. *Org. Lett.*, **2003**, 5, 3831.
2. *J. Org. Chem.*, **2004**, 69, 4031.
3. *Angew. Chem. Int. Ed.*, **2009**, 48, 2379.
4. *J. Polym. Sci. Pol. Chem.*, **2010**, 48, 3564.
5. *J. Organomet. Chem.*, **2012**, 716, 175.