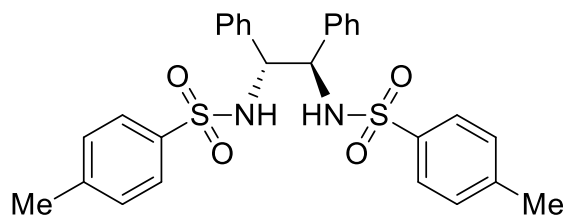
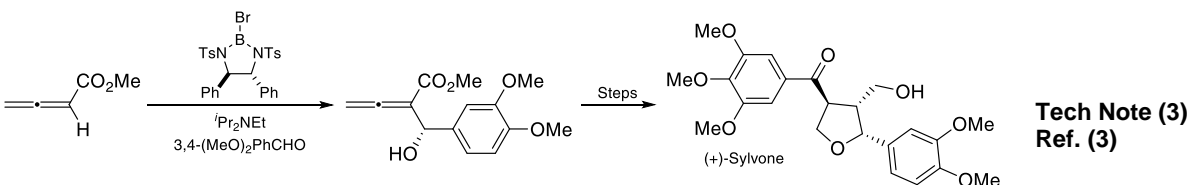
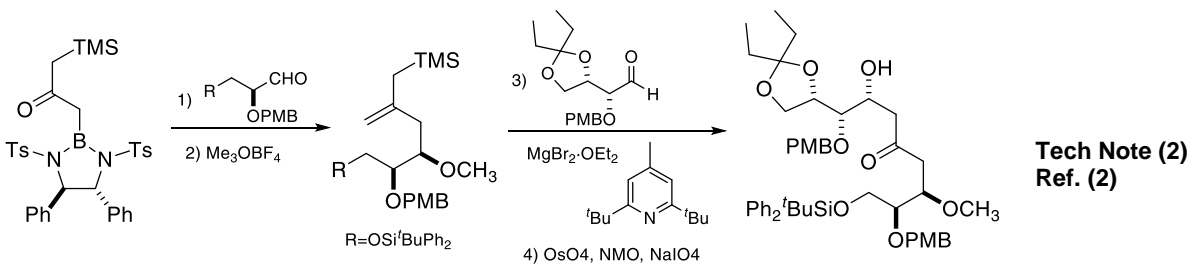
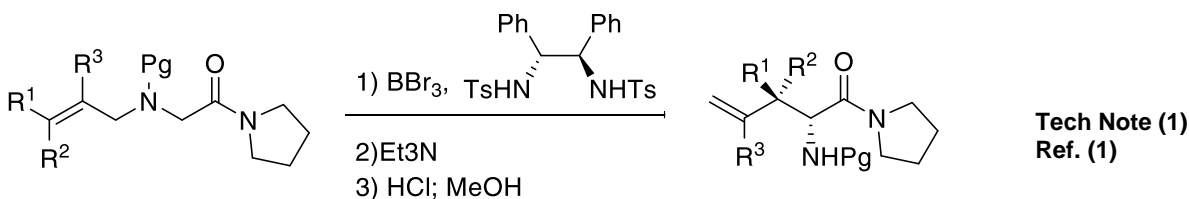


Catalog # 07-4060 (1R,2R)-N,N'-Di-p-tosyl-1,2-diphenyl-1,2-ethylenediamine, min. 98%



Technical Notes

1. Lewis acid mediated asymmetric [2,3]-sigmatropic rearrangement of achiral allylic amines.
2. A bidirectional S_E' strategy for 1,5-syn and 1,5-anti stereocontrol toward the synthesis of complex polyols.
3. Enantioselective synthesis of a furan lignan (+)-Sylvone.



References:

1. *J. Org. Chem.*, **2007**, 72, 1294.
2. *Org. Lett.*, **2012**, 14, 3866.
3. *J. Org. Chem.*, **2015**, 80, 10359.