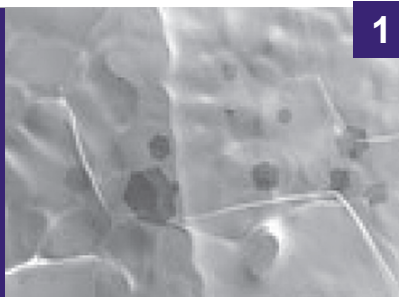


HSMG<sup>®</sup> is sold under license for research purposes only. U.S. Patent no. 9,284,640 B2.

## Monolayer High Strength Metallurgical Graphene, HSMG<sup>®</sup>

<b>06-0345</b>	Monolayer High Strength Metallurgical Graphene, HSMG <sup>®</sup> , on PMMA (10x10 mm)	1 pc
<b>06-0355</b>	Monolayer High Strength Metallurgical Graphene, HSMG <sup>®</sup> , on PMMA (25x25 mm)	1 pc
<b>06-0360</b>	Monolayer High Strength Metallurgical Graphene, HSMG <sup>®</sup> , on PMMA (50x50 mm)	1 pc
<b>06-0365</b>	Monolayer High Strength Metallurgical Graphene, HSMG <sup>®</sup> , on GLASS (10x10 mm)	1 pc

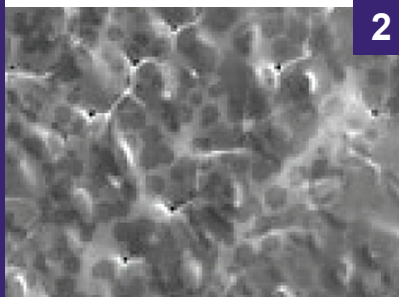
HSMG<sup>®</sup> GROWTH PROCESS



1

Absorption and incorporation of carbon atoms into the crystal structure of the copper matrix occurs during the carburization process. Maximum carbon content is significantly lower for liquid copper matrix than for solid state matrix, therefore, after heating above the melting point, the metal matrix becomes supersaturated with carbon atoms. **HSMG<sup>®</sup> growth is based on the controlled carbon precipitation from the liquid metal matrix.**

The growth process originates with nucleation of single hexagonal flakes on the metallic substrate. Liquid matrix enables grain rotation and rearrangement during nucleation process which results in larger grain sizes and improved graphene properties. This process is fully controlled and enables the production of graphene sheets with specified number of layers.

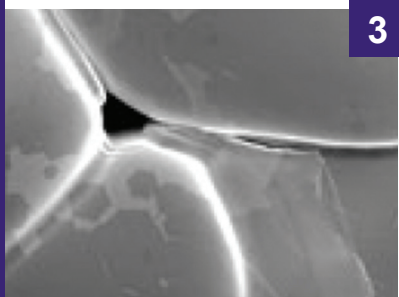


2

### STABLE NEGATIVE THERMAL COEFFICIENT

The HSMG<sup>®</sup> samples show anti-phase temperature resistance relationships during cyclic tests.

HSMG<sup>®</sup> Temperature coefficient of resistance  
 $-1.7 \cdot 10^{-3} \div -4 \cdot 10^{-4} [1/K]$



3

### EFFICIENT GAS ABSORPTION

HSMG<sup>®</sup> shows susceptibility to reversible gas sorption (including selective hydrogen sorption from gas mixture) which enables application of HSMG<sup>®</sup> as the functional material for future gas sensors.

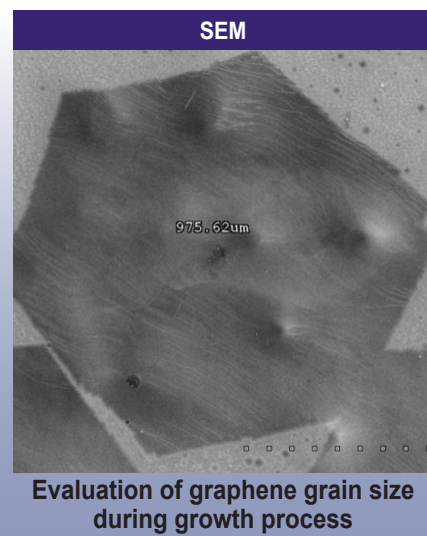


4



Nomarski interference contrast image

Grain arrangement during nucleation



SEM

Evaluation of graphene grain size during growth process

Visit [www.strem.com](http://www.strem.com) for new product information and a searchable catalog.

**Strem Chemicals, Inc.**  
 7 Mulliken Way  
 Newburyport, MA 01950  
 U.S.A  
 Tel: 978.499.1600  
 Fax: 978.465.3104  
 Email: [info@strem.com](mailto:info@strem.com)

**Strem Chemicals, Inc.**  
 15, rue de l'Atome  
 Zone Industrielle  
 67800 BISCHEIM France  
 Tel: (33) 03 88 62 52 60  
 Fax: (33) 03 88 62 26 81  
 Email: [info.europe@strem.com](mailto:info.europe@strem.com)

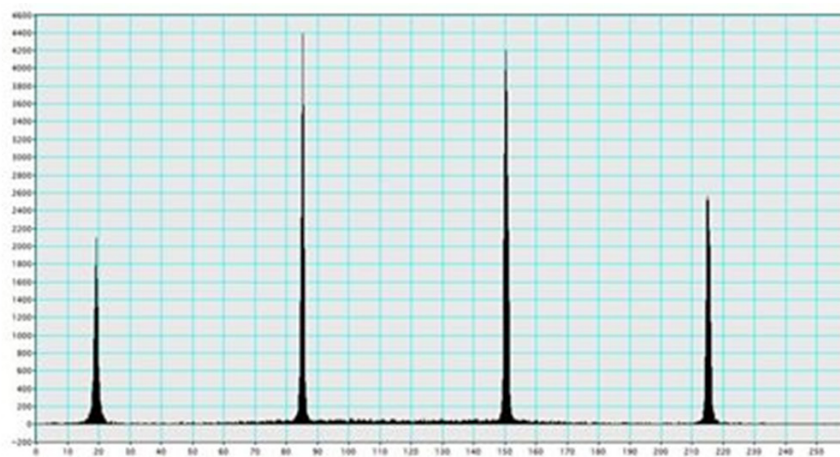
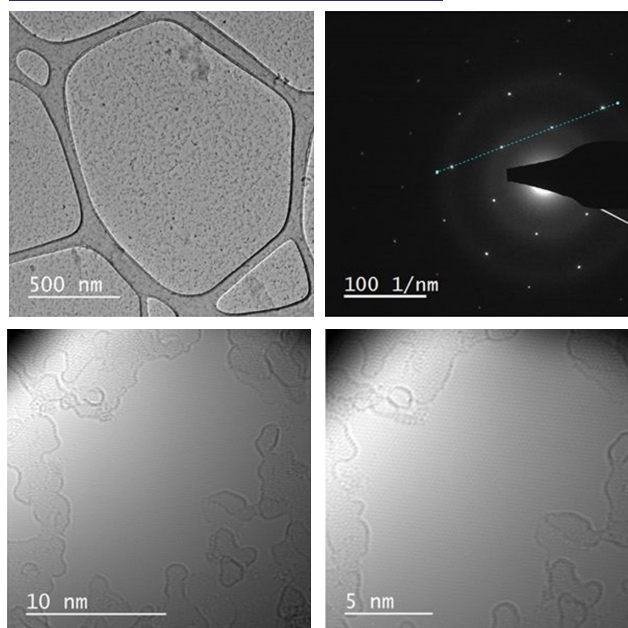
**Strem Chemicals, Inc.**  
 Postfach 1215  
 77672 KEHL  
 Germany  
 Tel: 0 78 51/ 7 58 79  
 Email: [info.europe@strem.com](mailto:info.europe@strem.com)

**Strem Chemicals UK Ltd.**  
 An Independent Distributor of Strem Chemicals Products  
 Newton Hall, Town Street  
 Newton, Cambridge  
 England CB22 7ZE  
 Tel: +44 (0)1223 873 028  
 Fax: +44 (0)1223 870207  
 Email: [enquiries@strem.co.uk](mailto:enquiries@strem.co.uk)

## PRODUCT DATA

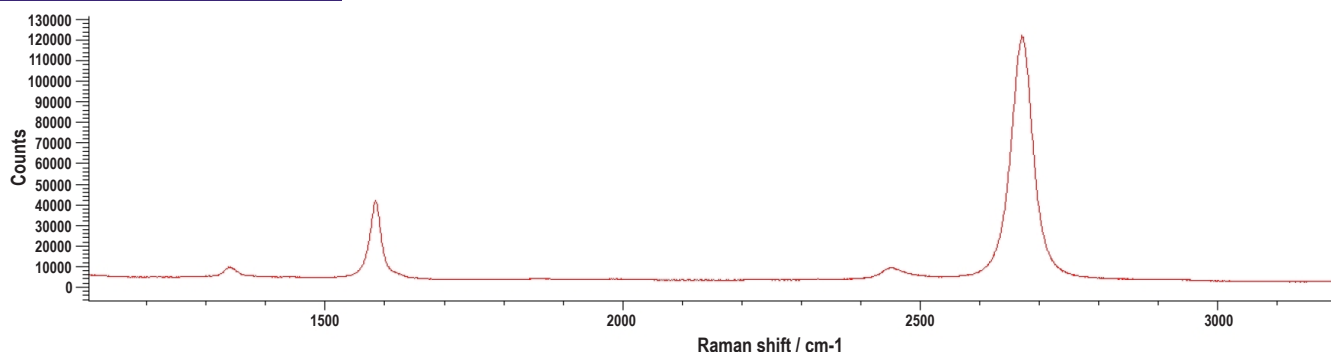
GROWTH METHOD	Metallurgical graphene growth on liquid metal
STANDARD SUBSTRATES	PMMA, Si/SiO <sub>2</sub> , quartz
TRANSFER AVAILABILITY	Transfer on custom substrates available upon request
QUALITY CONTROL	Raman spectroscopy Optical microscopy SEM microscopy
FORM	Graphene film
GRAIN SIZE	Up to 1mm
COVERAGE*	>95%
OPTICAL TRANSMITTANCE*	>97% (measured on quartz with UV-Vis method)
THICKNESS (THEORETICAL)	0.345 nm
AVERAGE SHEET RESISTANCE*	<250 Ω/cm <sup>2</sup> (measured on Si/SiO <sub>2</sub> with van der Pauw method)
*values confirmed by EIT+ Wroclaw Research Centre independent product evaluation study	

## TEM\*



HSMG® suspended on TEM grids

## Raman spectroscopy



Visit [www.strem.com](http://www.strem.com) for new product information and a searchable catalog.

**Strem Chemicals, Inc.**  
7 Mulliken Way  
Newburyport, MA 01950  
U.S.A  
Tel: 978.499.1600  
Fax: 978.465.3104  
Email: [info@strem.com](mailto:info@strem.com)

**Strem Chemicals, Inc.**  
15, rue de l'Atome  
Zone Industrielle  
67800 BISCHEIM France  
Tel: (33) 03 88 62 52 60  
Fax: (33) 03 88 62 26 81  
Email: [info.europe@strem.com](mailto:info.europe@strem.com)

**Strem Chemicals, Inc.**  
Postfach 1215  
77672 KEHL  
Germany  
Tel: 0 78 51/ 7 58 79  
Email: [info.europe@strem.com](mailto:info.europe@strem.com)

**Strem Chemicals UK Ltd.**  
An Independent Distributor of Strem Chemicals Products  
Newton Hall, Town Street  
Newton, Cambridge  
England CB22 7ZE  
Tel: +44 (0)1223 873 028  
Fax: +44 (0)1223 870207  
Email: [enquiries@strem.co.uk](mailto:enquiries@strem.co.uk)