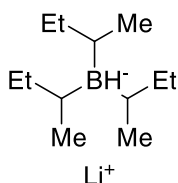


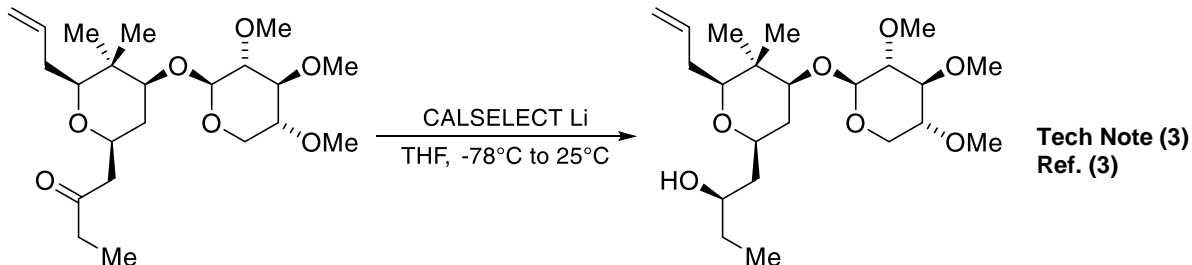
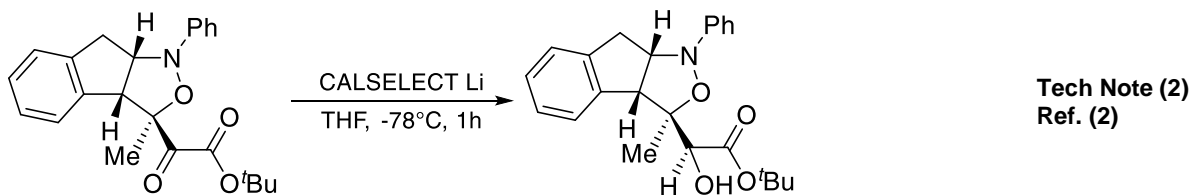
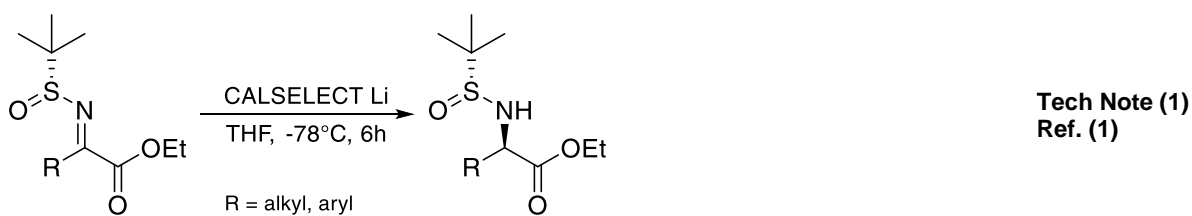
Catalog # 03-1400 CALSELECT™ Lithium tri-sec-butylborohydride, 1M in tetrahydrofuran, CALSELECT Li

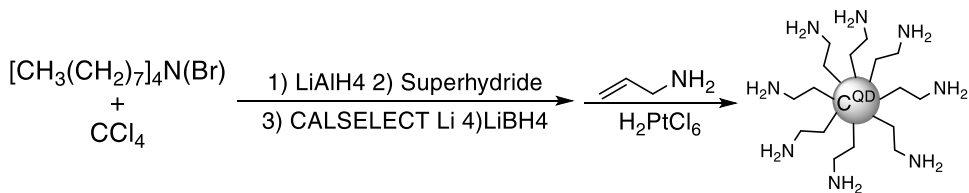


Alkali metal trialkylborohydrides have been used in numerous stereoselective and regioselective reductions. The strength and reactivity of these reducing agents varies with the steric bulk of the alkyl groups and the alkali metal ion.

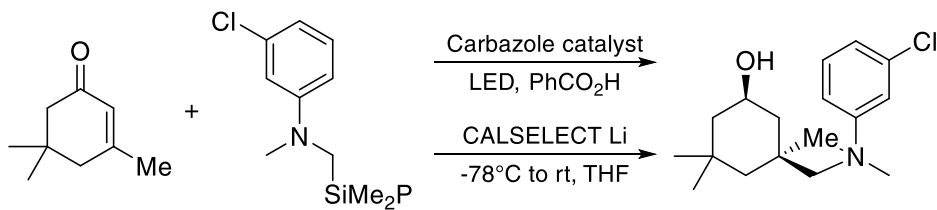
#### Technical Notes:

1. Used for asymmetric synthesis of  $\alpha$ -amino acids by reduction of *N*-tert-butanesulfinyl ketimine esters
2. Reductant used in the synthesis of  $\alpha$ -hydroxy isoxazolidine ester with subsequent formation of  $\alpha,\beta$ -dihydroxy- $\delta$ -amino acid
3. Used in the total synthesis of Cyanolide A
4. Reductant used in the size controlled synthesis of carbon quantum dots
5. Reagent used for stereoselective light driven preparation of trans-alcohol, the epimer of a compound useful for the treatment of influenza
6. Used in the stereoselective reduction of the carbonyl groups in  $\beta$ -indolyl cyclopentanones with L-Selectride providing the corresponding cyclopentanol
7. Used in enantioselective total synthesis of (-)-myrifabral A and B

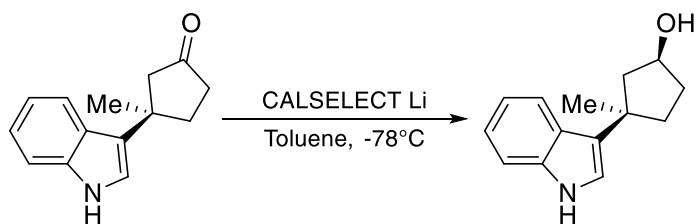




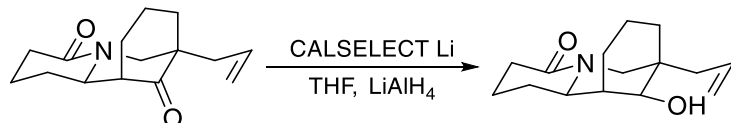
**Tech Note (4)**  
**Ref. (4)**



**Tech Note (5)**  
**Ref. (5)**



**Tech Note (6)**  
**Ref. (6)**



**Tech Note (7)**  
**Ref. (7)**

References:

1. [J. Org. Chem. 2011, 76, 3409](#)
2. [Chem. Sci., 2013, 4, 1281](#)
3. [Angew. Chem. Int. Ed. 2013, 52, 4470](#)
4. [J. Mater. Chem. C, 2014, 2, 6025](#)
5. [Nat. Commun. 2018, 9, 1](#)
6. [Org. Lett. 2019, 21, 3563](#)
7. [Chem. Sci., 2020, 11, 10802](#)



Headquartered in Bellevue, WA, **Ascensus Specialties is the global leader in catalysts, ligands, building blocks, and specialty reagents.** Our 60+ years of synthetic knowhow, allows us to bring additional value to our clients through our custom synthesis and cGMP services. From world-class production plants in Elma, WA, Evans City, PA, Newburyport, MA, and Cambridge, UK, Ascensus has a global reach that ensures our clients can consistently manufacture their products to the highest standards.

## ▶ THE ASCENSUS ADVANTAGE

**60+ Years Of Experience**

**Custom-Tailored Purity And Impurity Profiles**

**Commercial GMP Capabilities**

**Supply Chain Development**

**Process Control And Robustness**

**Bioburden Control**

## CONTACT

**P** +1-800-647-8736

**E** [info@ascensuspecialties.com](mailto:info@ascensuspecialties.com)

**U** [www.strem.com](http://www.strem.com)

**U** [www.ascensuspecialties.com](http://www.ascensuspecialties.com)



## CORPORATE OFFICE

**Ascensus Specialties**

2821 Northrup Way, Suite 275  
Bellevue, WA 98004

## MANUFACTURING FACILITIES

4800 State Route 12  
Elma, WA 98541

1424 Mars-Evans City Rd  
Evans City, PA 16033

7 Mulliken Way  
Newburyport, MA 01950

Haverhill Road,  
Stradishall Newmarket  
Suffolk, CB8 9EX